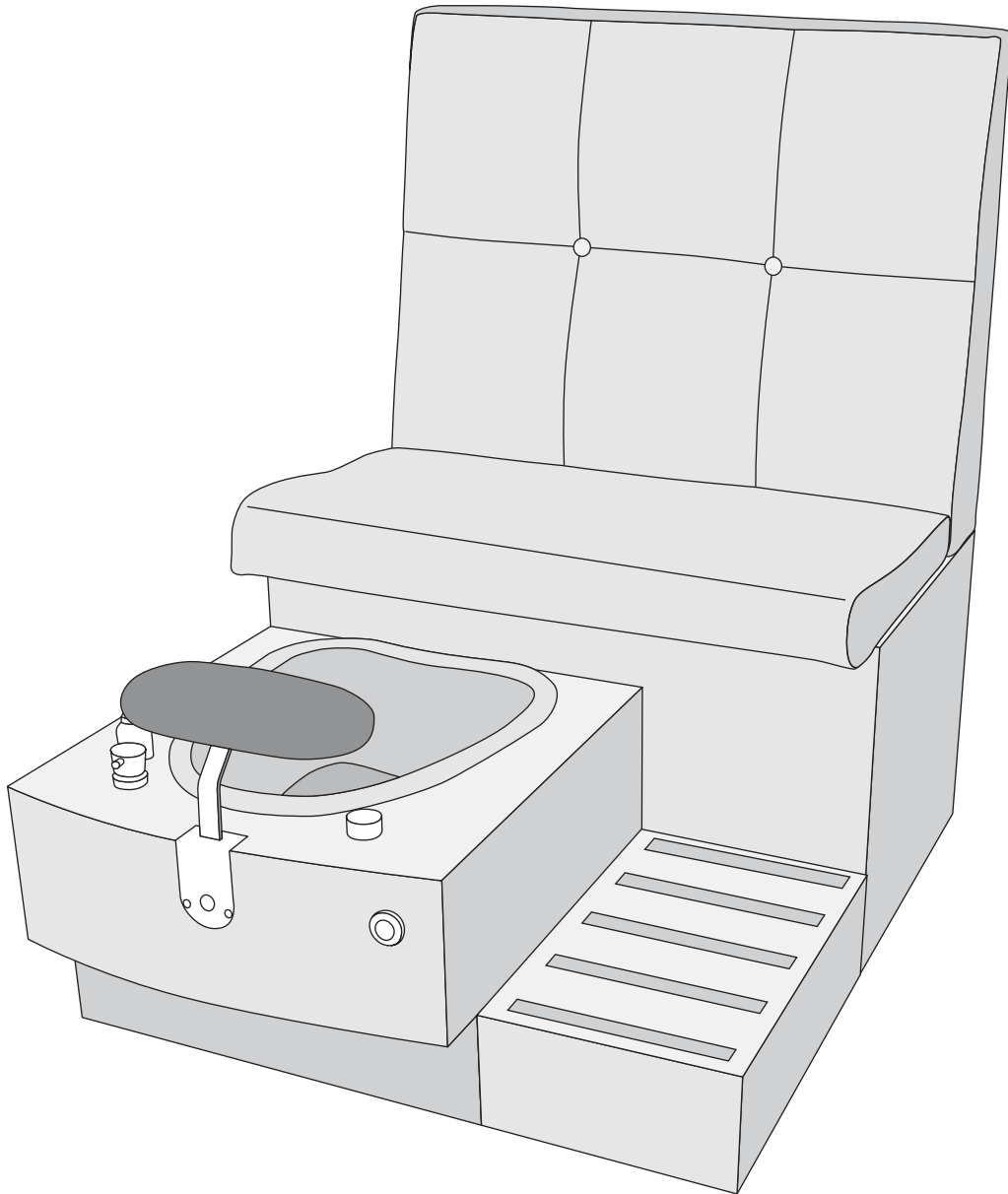
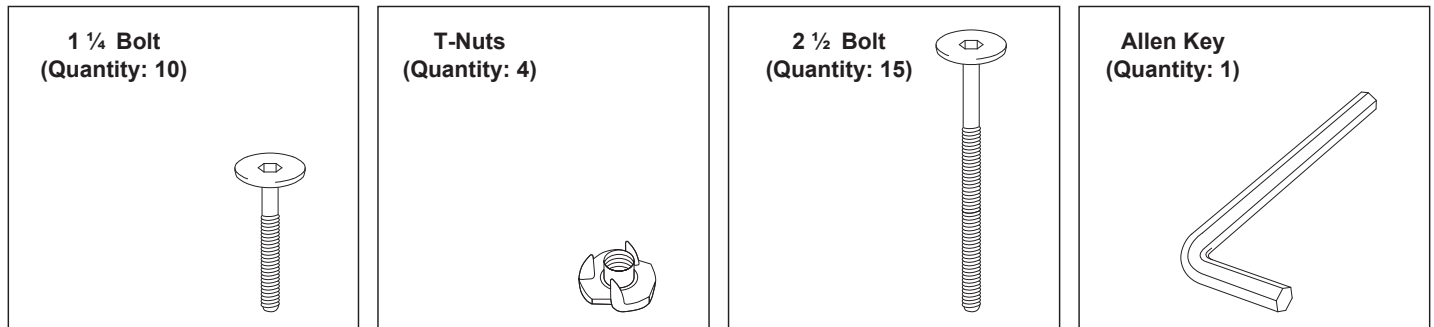


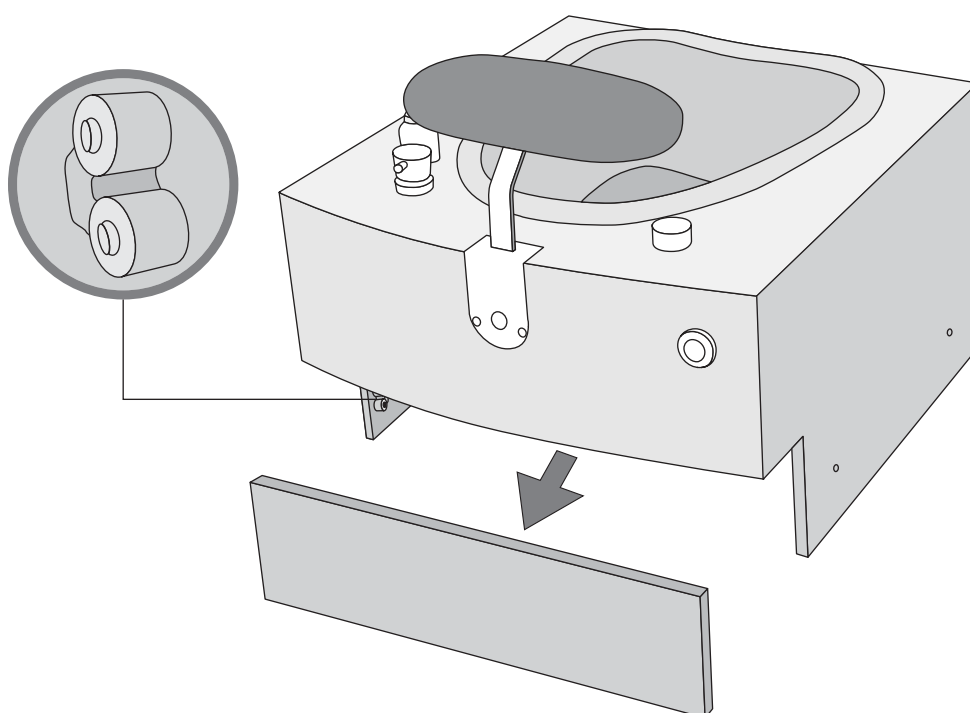
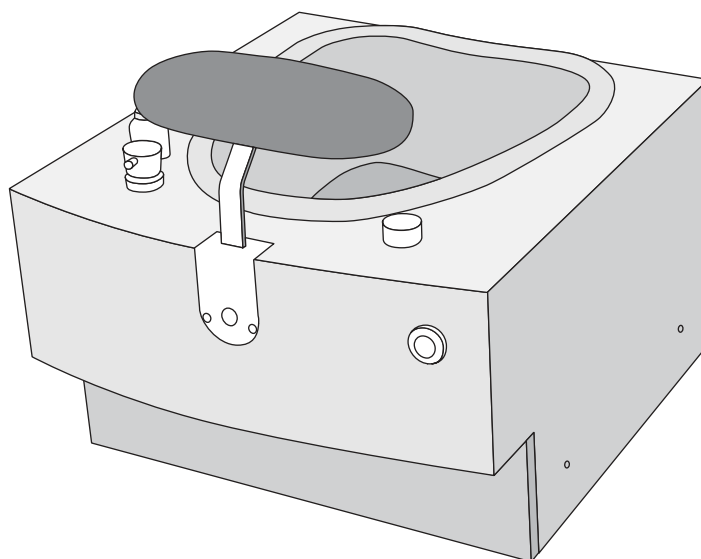
# SINGLE, DOUBLE, TRIPLE SELENA BENCH ASSEMBLY INSTRUCTIONS

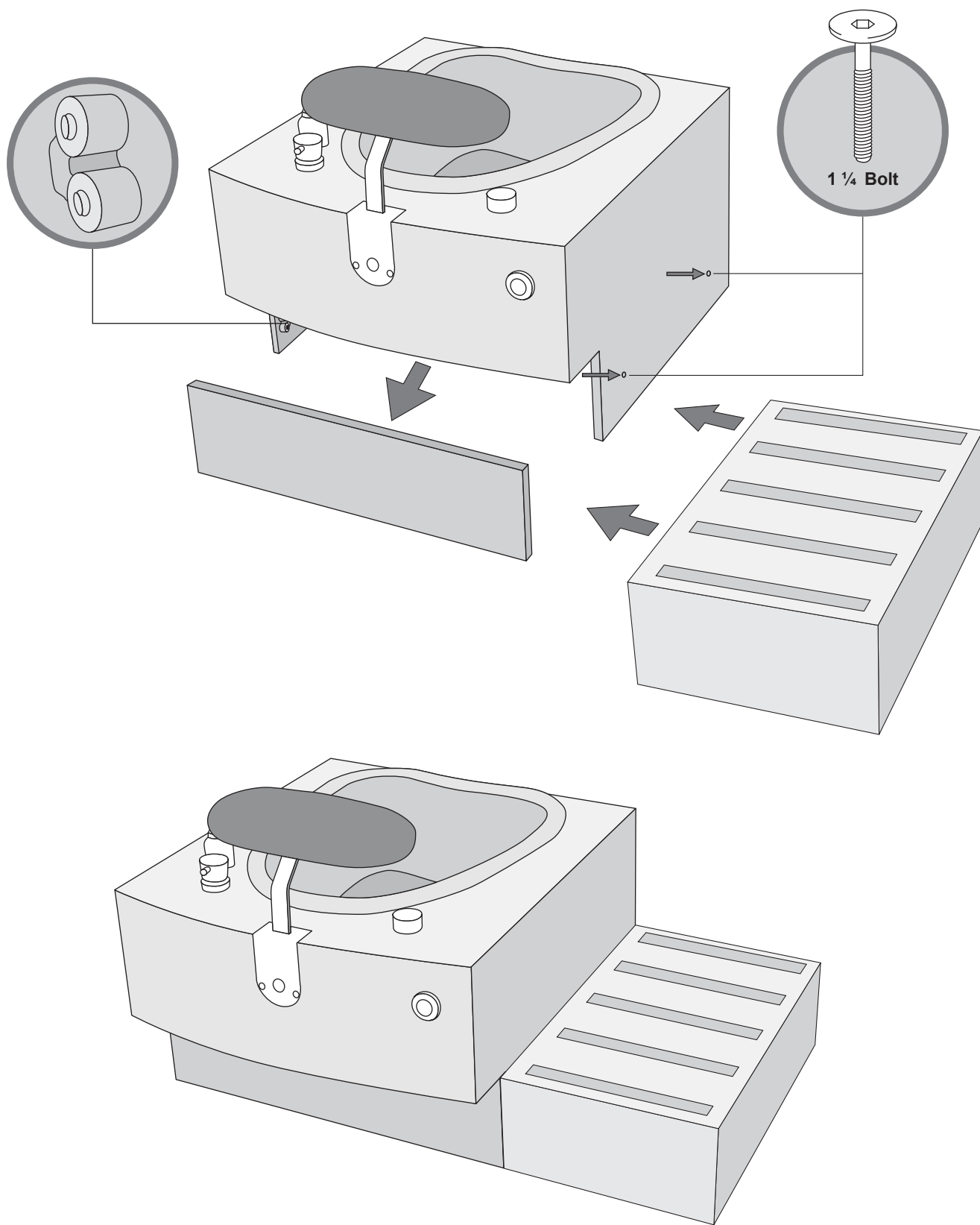


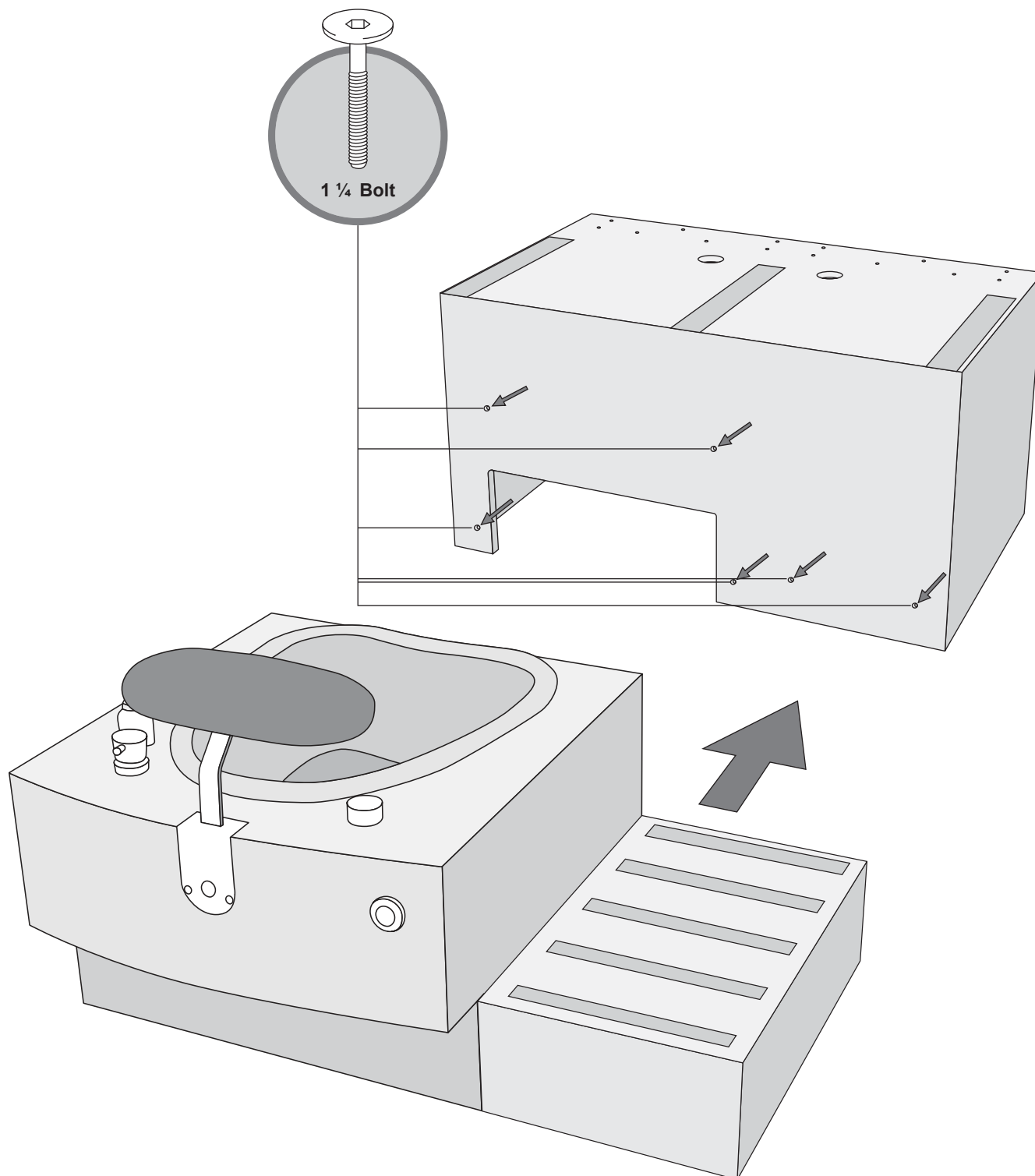
**Included Hardware for Single Bench****Important Safety Instructions**

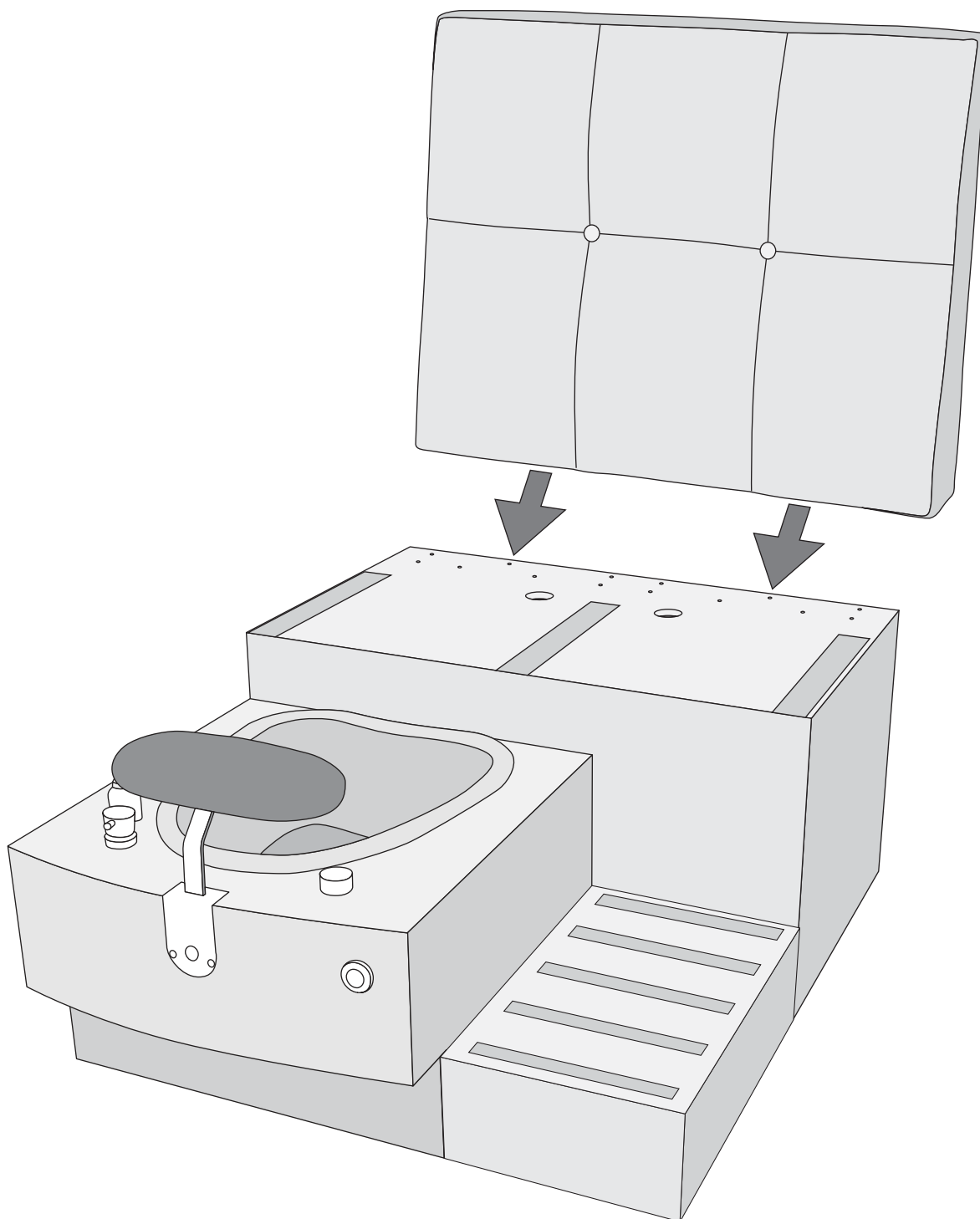
Obey the following warnings:

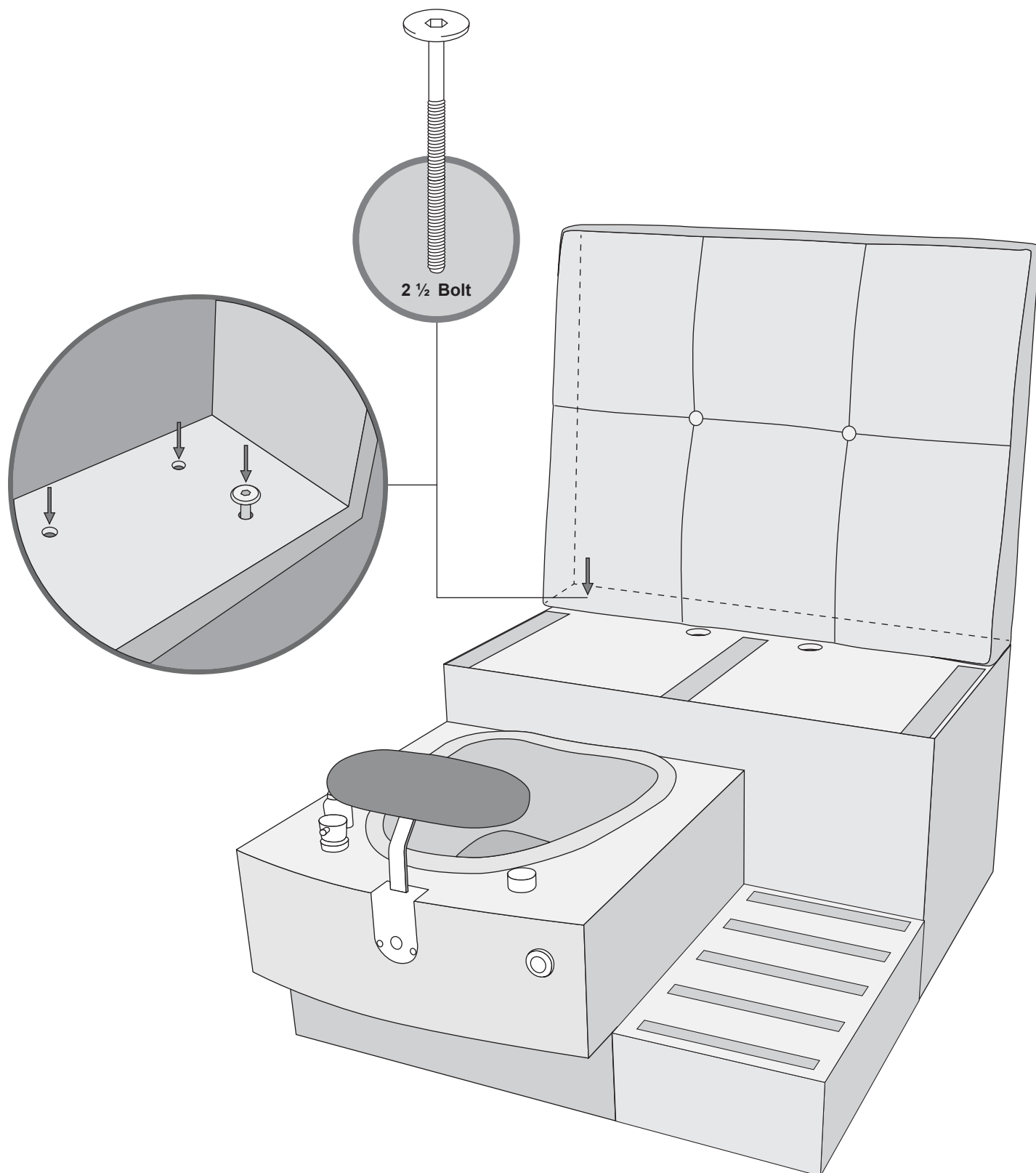
- Keep bystanders and children away from the product you are assembling at all times.
- Do not connect power supply to the machine until instructed to do so.
- Do not assemble this machine outdoors or in a wet or moist location.
- Make sure assembly is done in an appropriate work space away from foot traffic and exposure to bystanders.
- Some components of the machine can be heavy or awkward. Use a second person when doing the assembly steps involving these parts. Do not do steps that involve heavy lifting or awkward movements on your own.
- Set up this machine on a solid, level, horizontal surface.
- Do not try to change the design or functionality of this unit. This could compromise the safety of this unit and will void the warranty.
- Do not use until the machine has been fully assembled and inspected for correct performance in accordance with the Owner's Manual.
- Read and understand the complete Owner's Manual supplied with this machine before first use. Keep the Owner's and Assembly Manuals for future reference.
- Do all assembly steps in the sequence given. Incorrect assembly can lead to injury or malfunctioning of the machine.

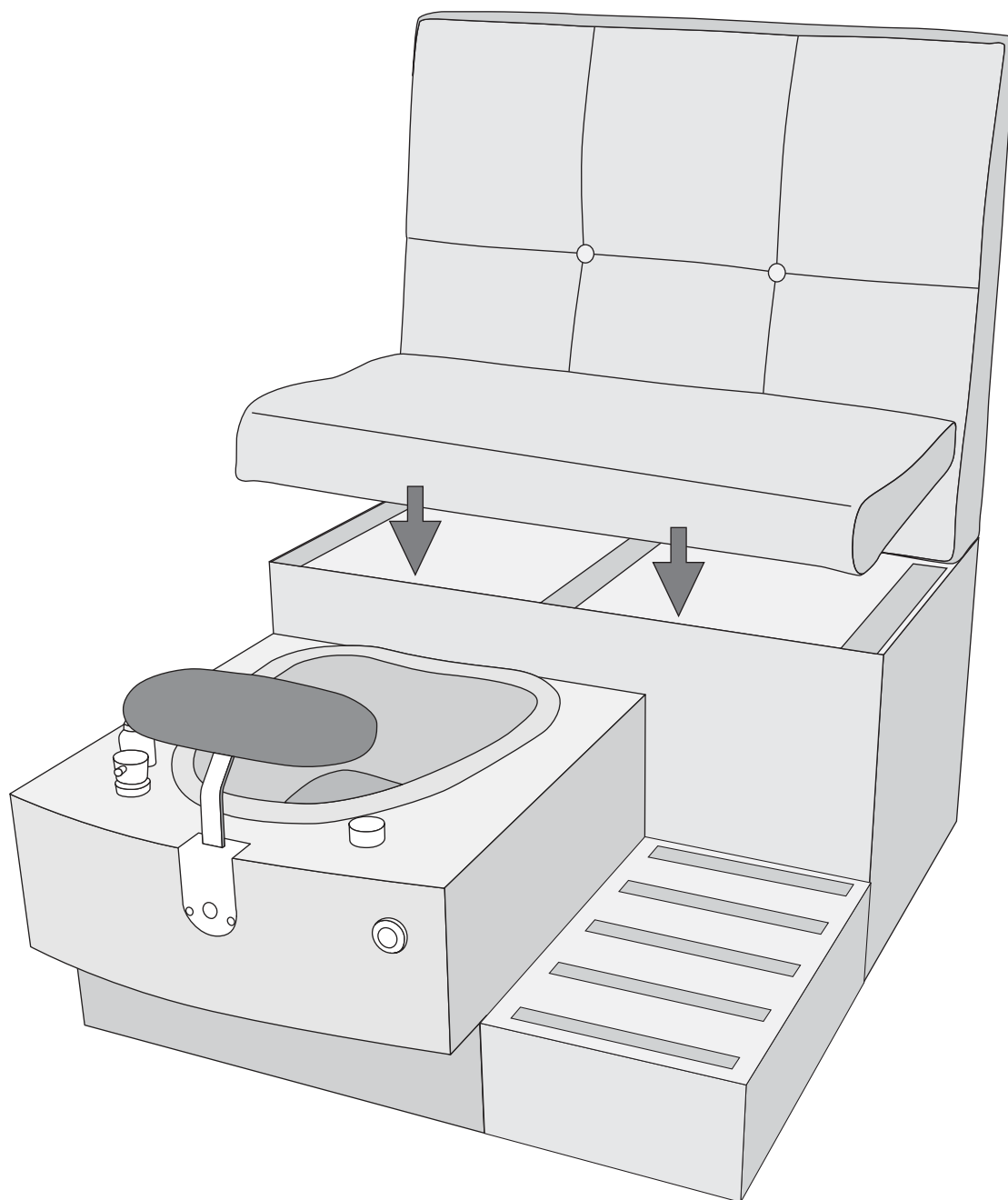






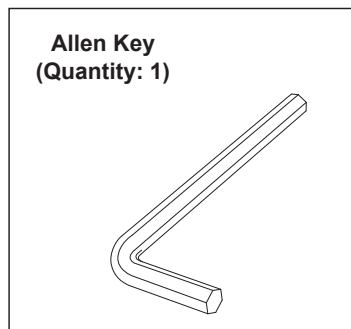
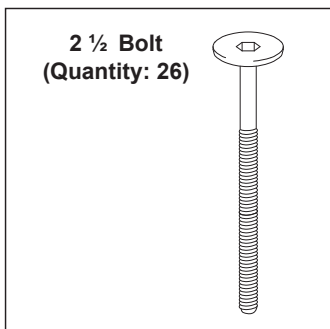
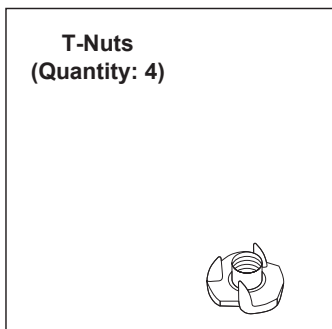
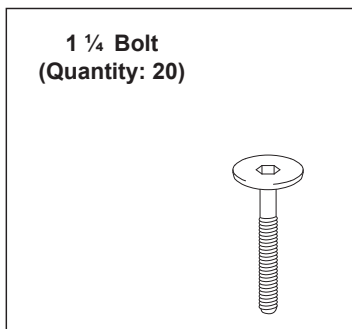




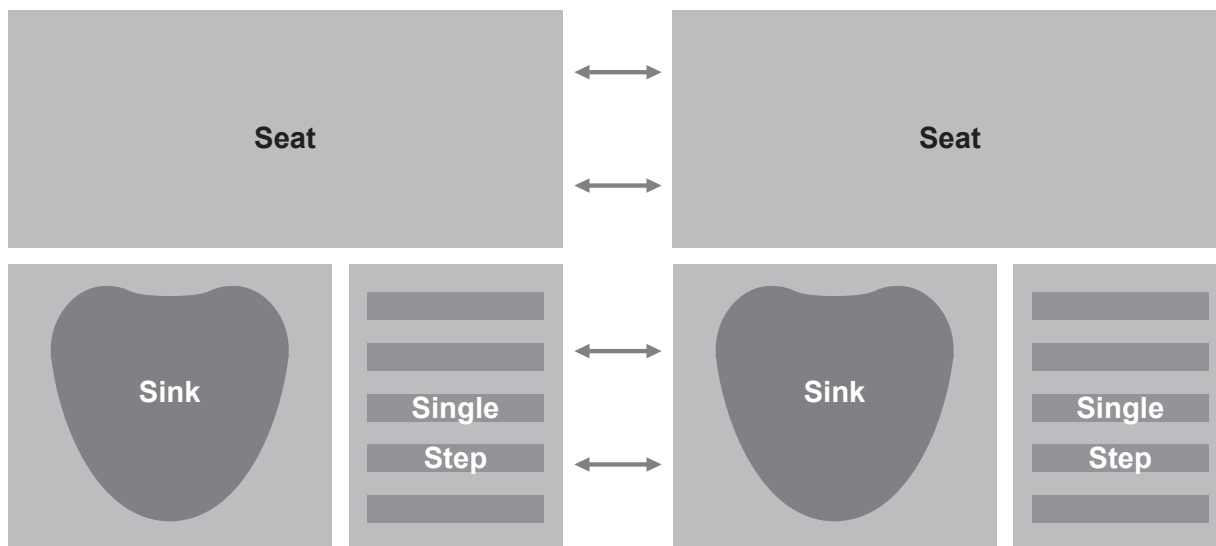




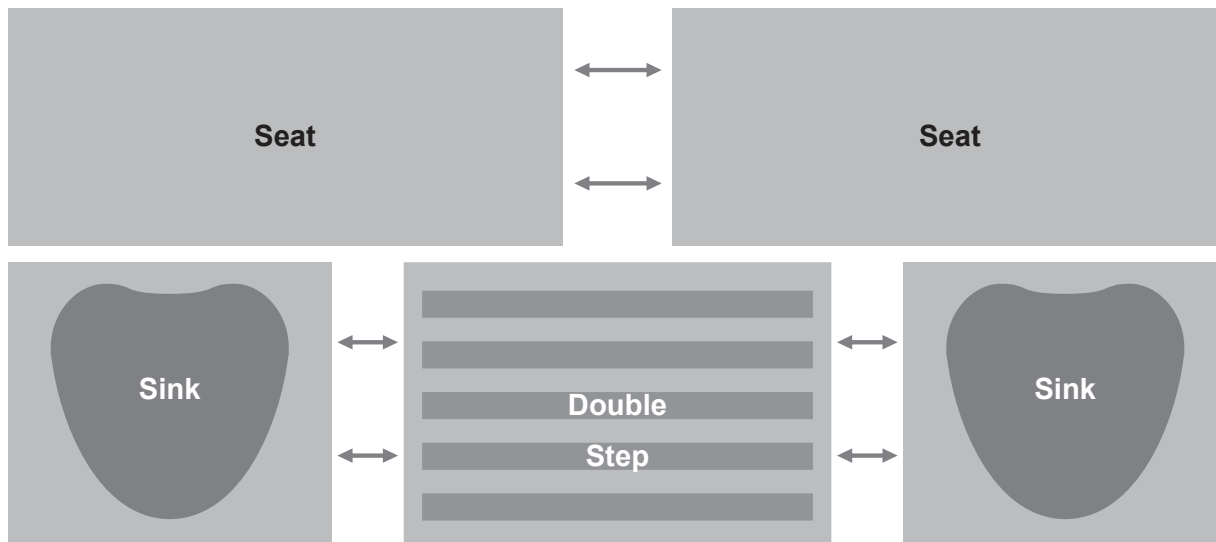
## Included Hardware for Double Bench



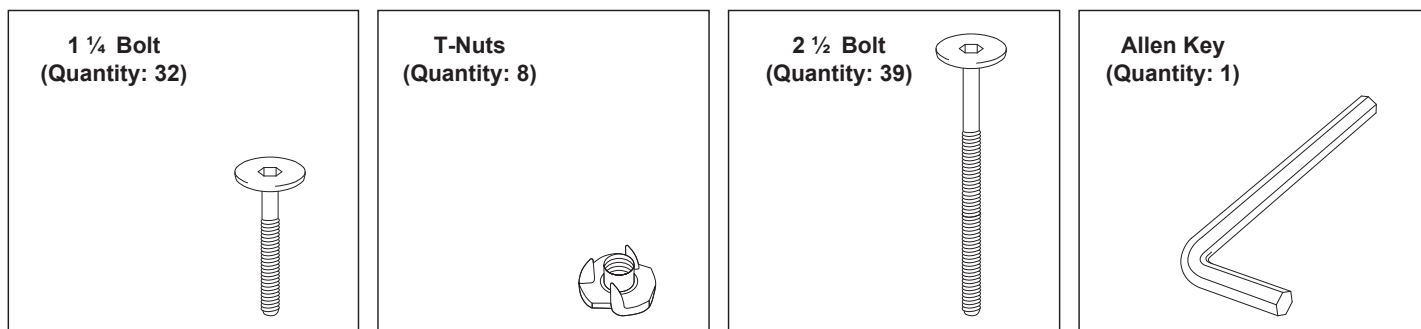
## Double Bench Assembly (2 Single Steps, Asymmetrical )



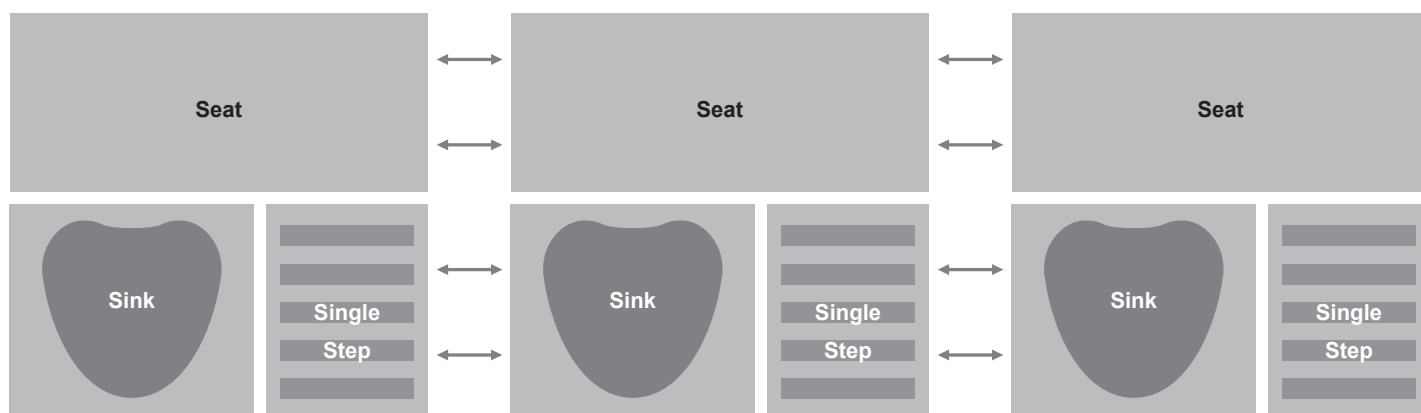
## Double Bench Assembly (1 Double Step, Symmetrical)



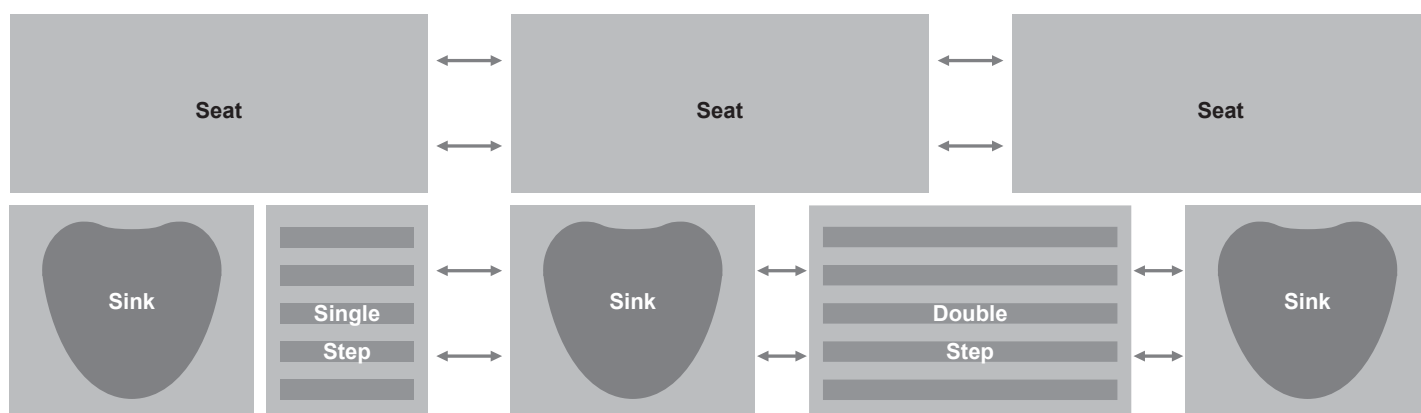
## Included Hardware for Triple Bench



## Triple Bench Assembly (3 Single Steps )



## Triple Bench Assembly (1 Single & 1 Double Step)





Manufacturer of Luxurious Pedicure Spas,  
High Quality Salon and Spa Furnitures.

**Gulfstream Inc.**

Cambridge, Ontario, Canada N1R 5X5

Tel.: 519-622-0950

Fax: 519-622-6926