



Lexor®

PEDI-SPA USER MANUAL

PRESTIGE™

ENVISION™

ELITE®

LUMINOUS®

INFINITY™

LIBERTÉ®

VERSAS®



Lexor®

THE KEY TO SALON SUCCESS

PEDICURE SPA USER MANUAL

Models: Prestige, Envision, Elite, Luminous, Infinity, Liberte & Versas.

Before Operating the unit, please read this manual thoroughly and retain it for future reference.

RECEIVING AND INSPECTION:

PLEASE TAKE NOTE! Thoroughly inspect each shipment immediately upon arrival. It is important that you notify the driver and insist on a notation of the damage. Make this notation directly on the freight company's waybill or bill of lading. Failure to note damage on the waybill or bill of lading may impede and/or prevent any claims that you may have against the freight carrier. If missing parts or damage is found, please notify the carrier at once and request an inspection. DO NOT DISCARD THE SHIPPING BOX. If you give the carrier a clear receipt for goods that have been damaged in transit, you do so at your own risk and expense.

Table of Contents

Receiving And Inspection / Table Of Contents	1
Safety & Precautions	2
PARTS	
Identifying Parts for PRESTIGE™ Model	3
Identifying Parts for ENVISION™ Model	4
Identifying Parts for ELITE® Model	5
Identifying Parts for LUMINOUS® Model	6
Identifying Parts for INFINITY™ Model	7
Identifying Parts for LIBERTE® Model	8
Identifying Parts for VERSAS® Model	9
INSTALLATION	
Wall clearance & Spa Recommended Clearance:	10
Gravity Drain / Power Drain	11
Hot and Cold Water Supply Lines / Ventilation spa	12
SPA SPECIFICATION	
Electrical and Pedicure Spa Component Specifications / Auto-Fill™ Models Operation	13
OPERATION AND CARE	
Auto-Fill™ / Jet Switch / Drain Switch	14
Digital Control System (DCS)	15
Manual Operation	16
Magnetic Whirlpool Jet & Auto Fill Liner & Foot-rest Calf Support	17
Massage System & Remote Controller	17
Cleaning Suggestion for Pedicure Spas	18
WARRANTY & CERTIFICATION	
LEXOR LIMITED FACTORY WARRANTY	19
UL US & CANADA Certification	20
IAPMO UPC Certification	21
EURO Certification	22

READ AND FOLLOW INSTRUCTIONS CAREFULLY**SAFETY PRECAUTIONS:****Warning**

**THIS PRODUCT IS FOR INDOOR USE ONLY & IS NOT RECOMMENDED FOR USE ON CARPET OR WOOD FLOORS
DISCONNECT POWER SUPPLY CORD BEFORE SERVICING**

This product is to be connected to a branch circuit outlet protected by a Class A GROUND FAULT CIRCUIT INTERRUPTER (GFCI), and the GFCI shall be tested regularly for continued protection and correct operation. If a Class A GFCI protected outlet is not available, **DO NOT USE THIS PRODUCT!** Please contact a licensed electrician for installation of a Class A GFCI according to local electric codes, or equivalent.

**Warning**

DO NOT USE if you are diabetic, have poor circulation, or if any area of your feet or legs is inflamed or has an open sore. Consult your physician before using if you have any kind of fungal infection, swelling, fracture or persistent pain.

**Warning**

TO REDUCE RISK OF INJURY, DO NOT PERMIT CHILDREN TO USE THIS UNIT UNLESS THEY ARE CLOSELY SUPERVISED AT ALL TIME

- LIRE LES INSTRUCTION DU FABRICANT AVANT DE METTRE EN MARCHE
- UTILISER SEULEMENT A L'INTERIEUR
- COUPER LE COURANT AVANT DE PROCEDRE AU DEPANNAGE, AU NETTOYAGE

**Warning**

1. Excessive water temperature is dangerous and should be checked BEFORE use.
2. Maximum temperature of the water should never exceed 100 degrees F.
3. DO NOT STEP/ STAND IN FOOT BASIN.
4. Always enter and exit the Pedicure Spa slowly and carefully.
5. NEVER bring and / or operate any electrical devices into or near the Pedicure Spa.
6. Maximum load in spa chair is 250lbs (114kg).
7. Do not over use of bleach or it will damage the spa , 1 teaspoon of 5.25% bleach for each gallon of water is recommended

**Warning**

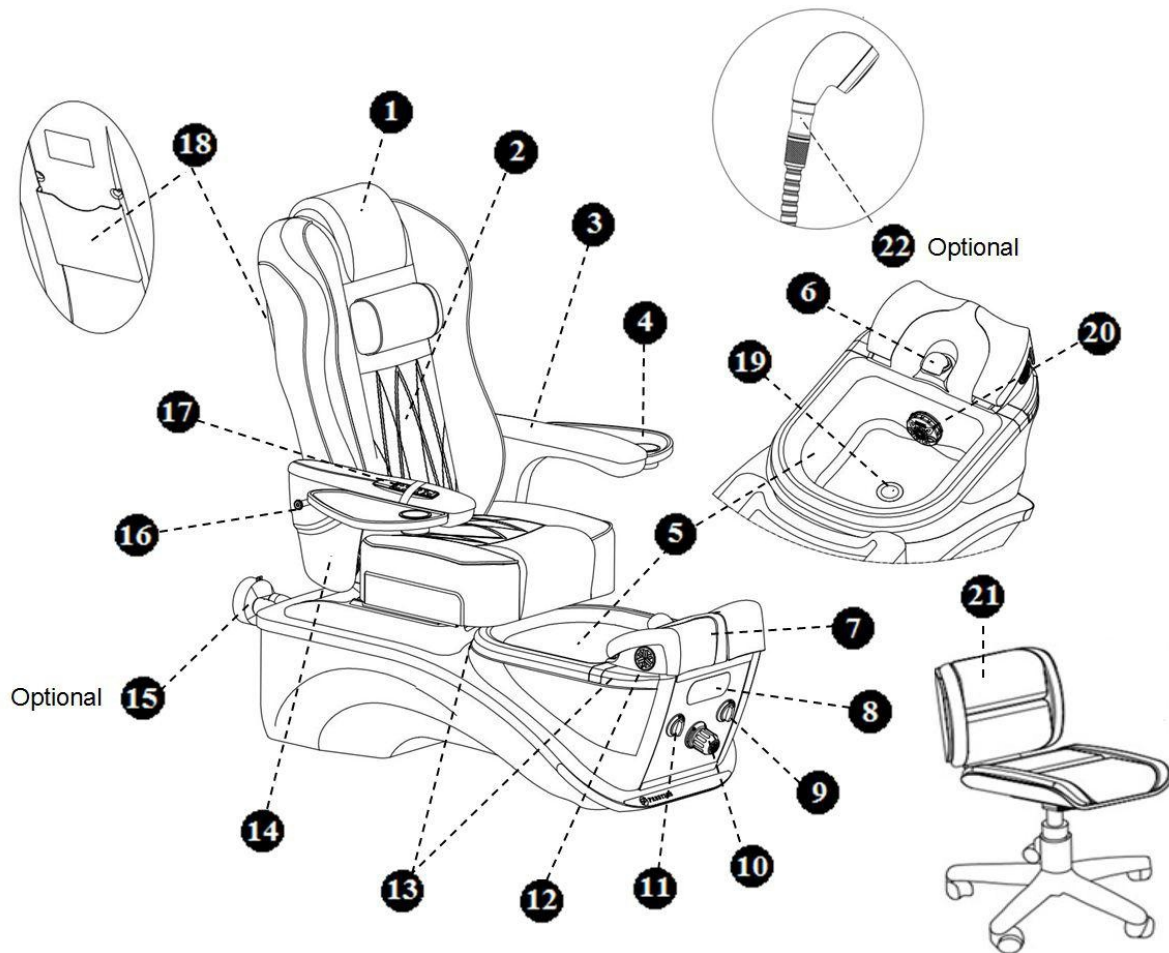
PROPER INSTALLATION ACCORDING TO THIS MANUAL IS REQUIRED. FAILURE TO DO SO MAY RESULT IN SERIOUS INJURY AND/OR WARRANTY WILL BE NULL. YOU MUST HAVE A QUALIFIED LICENSED PLUMBER TO CONNECT THE SPA IN PLACE SAFELY.

STATES' NOTICE

In the common wealth of most of the States, all pedicure spas shall be installed for Commercial usage in the states, are required to have backflow preventer. This equipment shall be installed between the water inlets and the spa at Salon's cost

PLEASE SAVE THESE INSTRUCTIONS FOR FUTURE REFERENCE

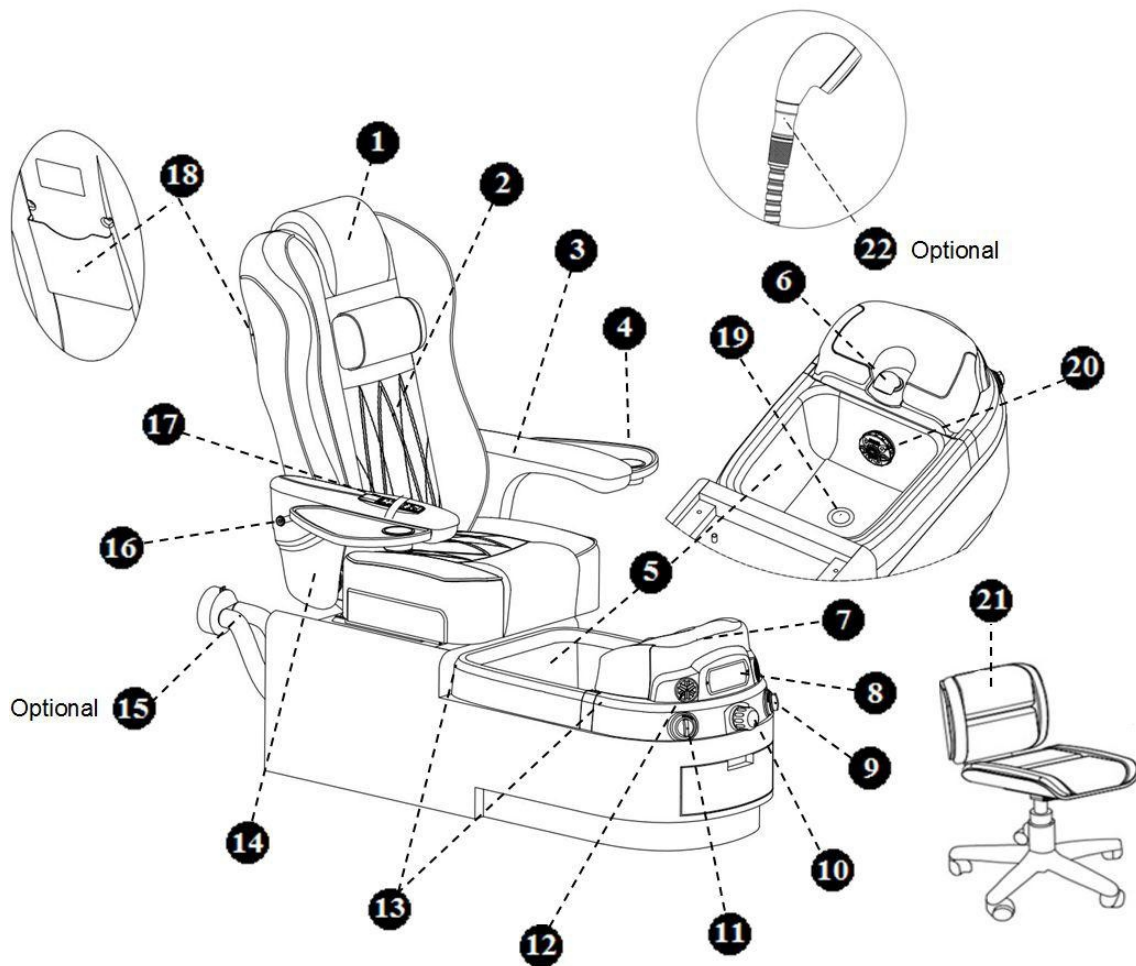
Identifying Parts for PRESTIGE™ Model



Pedicure Whirlpool with Massage System

- | | |
|---|---|
| 1. Headrest | 11. Sani-Drain™ System with discharge On/Off Knob |
| 2. Chair Cushion with Massage | 12. Vent Inlet (2 Places) |
| 3. Armrest Cushion | 13. Liner Hook |
| 4. Manicure-Tray | 14. Up/Down Armrest |
| 5. Aurora™ Bowl | 15. Vent Outlet (Optional) |
| 6. Flex Water Filler/Spray Spout | 16. Handbag (Purse) Hook |
| 7. Foot Rest with Calf Support | 17. Massage Remote Control |
| 8. Digital Control System Panel | 18. Paper Tray |
| 9. Dual Function Auto-Fill™ & Jet On/Off Knob | 19. Drain Stopper |
| 10. Hot/Cold Water Mixer Valve | 20. ECOJET® Magnetic Drive |
| | 21. Low Profile Pedicure Stool |
| | 22. Back Flow Preventer (Optional) |

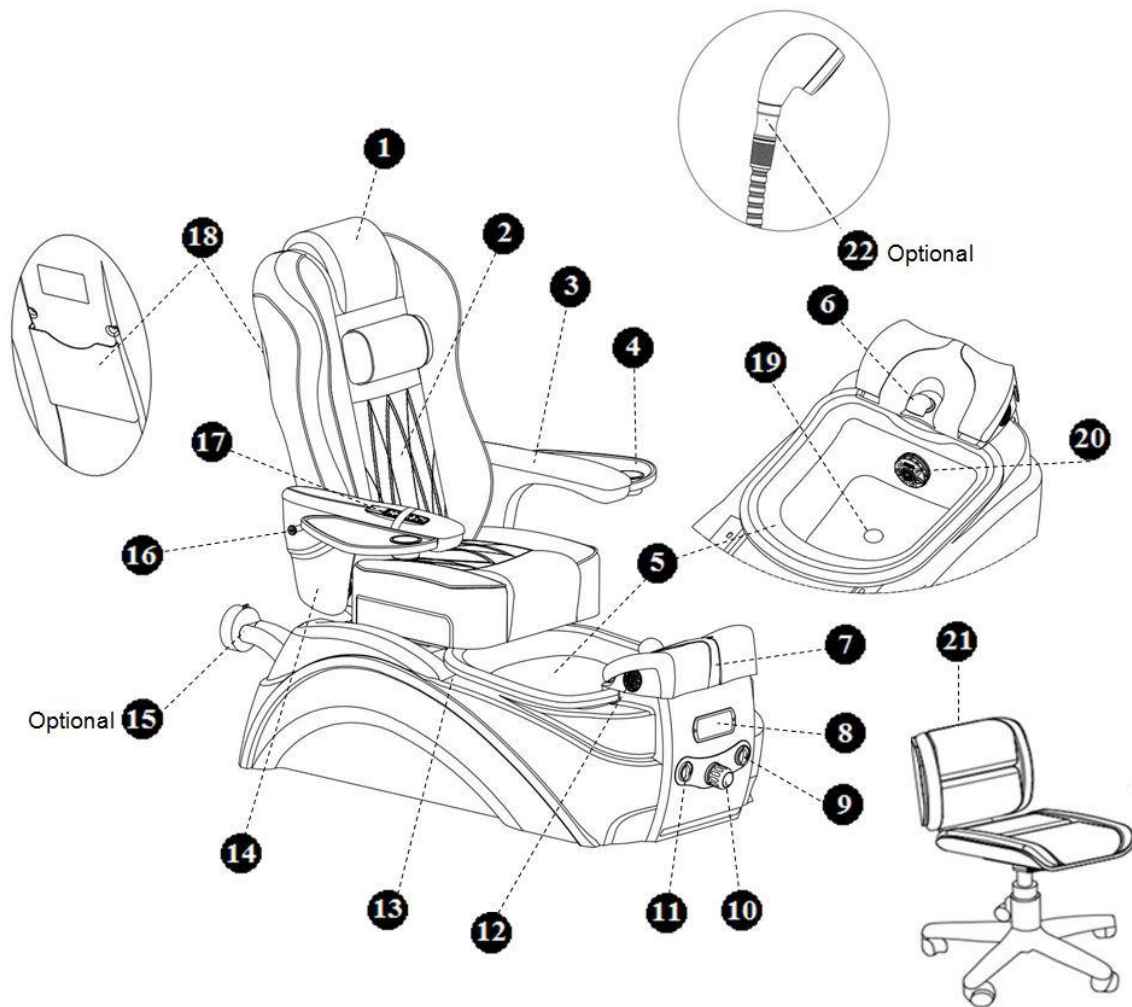
Identifying Parts for ENVISION™ Model



Pedicure Whirlpool with Massage System

- | | |
|---|---|
| 1. Headrest | 11. Sani-Drain™ System with discharge On/Off Knob |
| 2. Chair Cushion with Massage | 12. Vent Inlet (2 Places) |
| 3. Armrest Cushion | 13. Liner Hook |
| 4. Manicure-Tray | 14. Up/Down Armrest |
| 5. Aurora™ Bowl | 15. Vent Outlet (Optional) |
| 6. Flex Water Filler/Spray Spout | 16. Handbag (Purse) Hook |
| 7. Foot Rest with Calf Support | 17. Massage Remote Control |
| 8. Digital Control System Panel | 18. Paper Tray |
| 9. Dual Function Auto-Fill™ & Jet On/Off Knob | 19. Drain Stopper |
| 10. Hot/Cold Water Mixer Valve | 20. ECOJET® Magnetic Drive |
| | 21. Low Profile Pedicure Stool |
| | 22. Back Flow Preventer (Optional) |

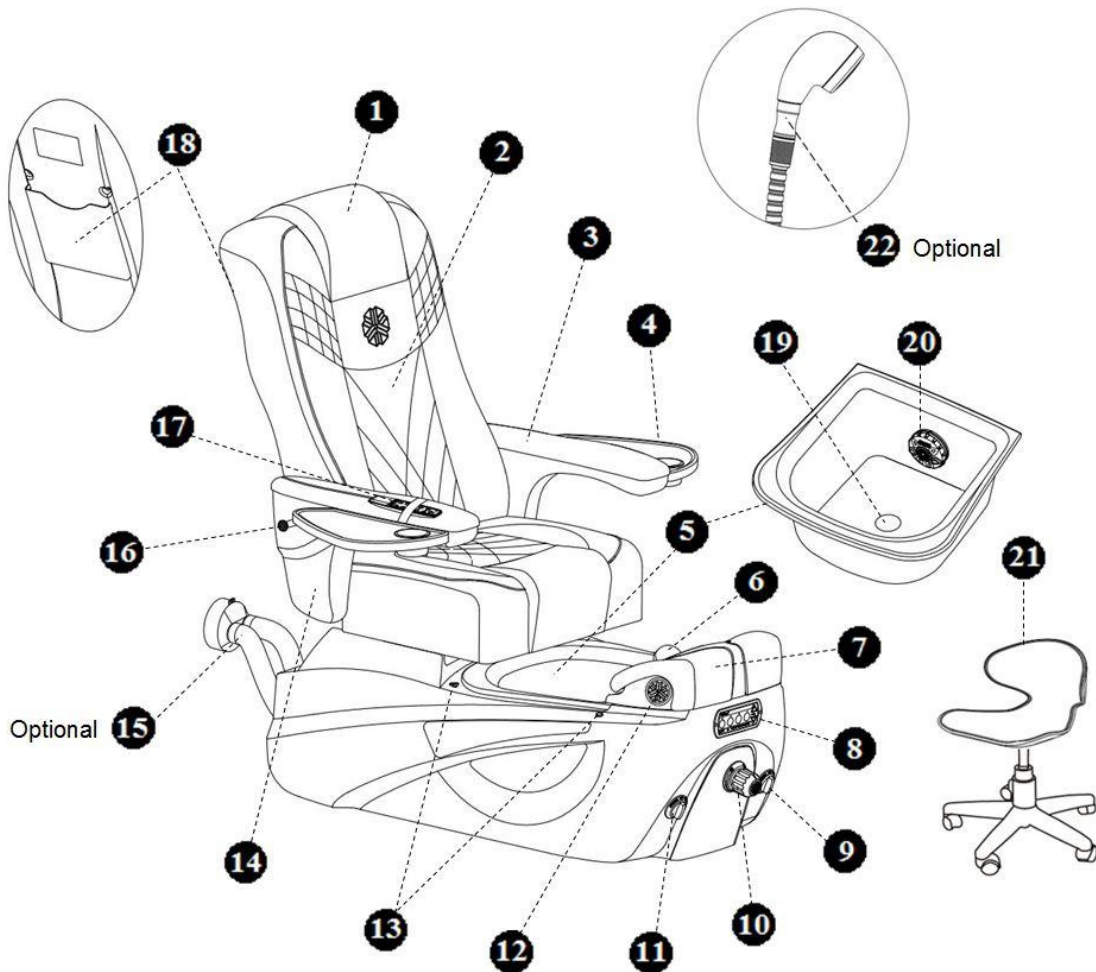
Identifying Parts for ELITE® Model



Pedicure Whirlpool with Massage System

- | | |
|---|---|
| 1. Headrest | 11. Sani-Drain™ System with discharge On/Off Knob |
| 2. Chair Cushion with Massage | 12. Vent Inlet (2 Places) |
| 3. Armrest Cushion | 13. Liner Hook |
| 4. Manicure-Tray | 14. Up/Down Armrest |
| 5. Aurora™ Bowl | 15. Vent Outlet (Optional) |
| 6. Flex Water Filler/Spray Spout | 16. Handbag (Purse) Hook |
| 7. Foot Rest with Calf Support | 17. Massage Remote Control |
| 8. Digital Control System Panel | 18. Paper Tray |
| 9. Dual Function Auto-Fill™ & Jet On/Off Knob | 19. Drain Stopper |
| 10. Hot/Cold Water Mixer Valve | 20. ECOJET® Magnetic Drive |
| | 21. Low Profile Pedicure Stool |
| | 22. Back Flow Preventer (Optional) |

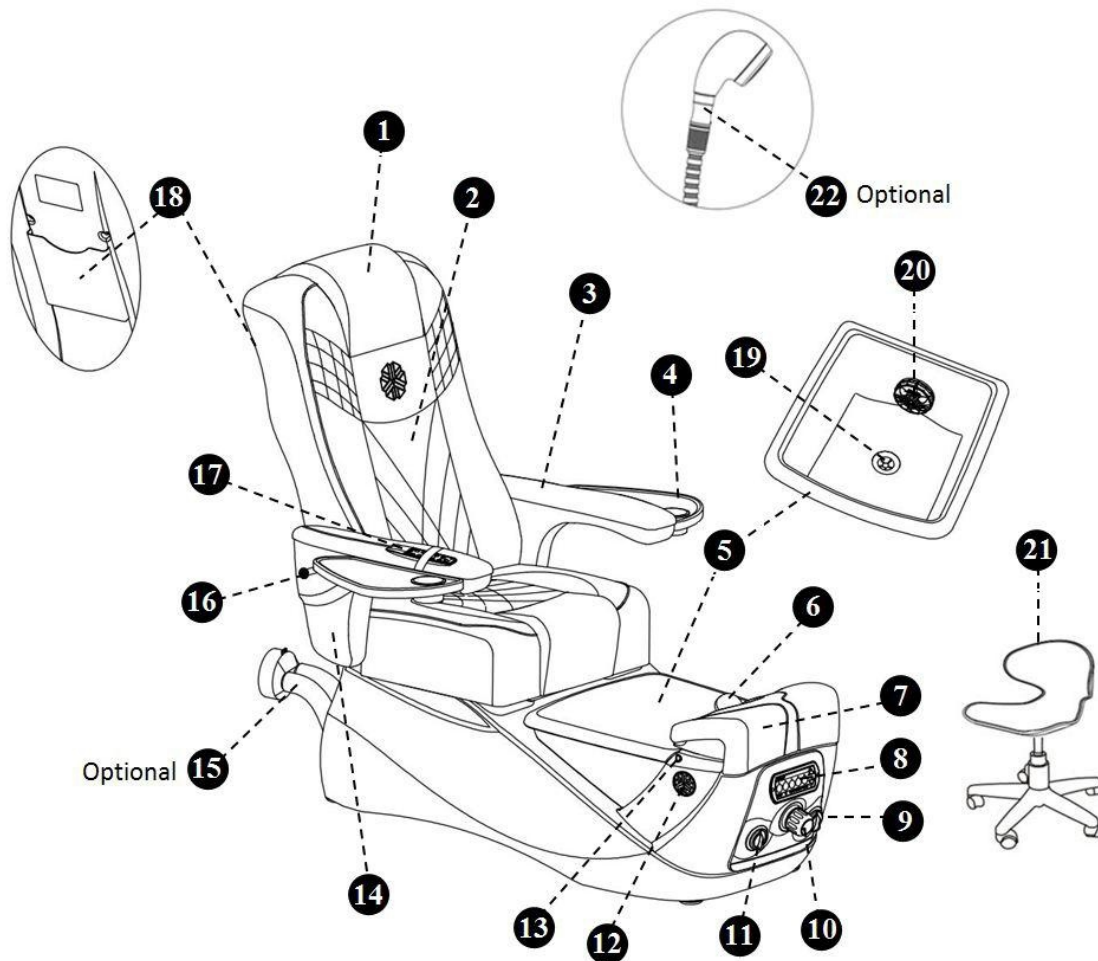
Identifying Parts for LUMINOUS® Model



Pedicure Whirlpool with Massage System

- | | |
|---|---|
| 1. Headrest | 11. Sani-Drain™ System with discharge On/Off Knob |
| 2. Chair Cushion with Massage | 12. Vent Inlet (2 Places) |
| 3. Armrest Cushion | 13. Liner Hook |
| 4. Manicure-Tray | 14. Up/Down Armrest |
| 5. Aurora™ Bowl | 15. Vent Outlet (Optional) |
| 6. Flex Water Filler/Spray Spout | 16. Handbag (Purse) Hook |
| 7. Foot Rest with Calf Support | 17. Massage Remote Control |
| 8. Digital Control System Panel | 18. Paper Tray |
| 9. Dual Function Auto-Fill™ & Jet On/Off Knob | 19. Drain Stopper |
| 10. Hot/Cold Water Mixer Valve | 20. ECOJET® Magnetic Drive |
| | 21. Low Profile Pedicure Stool |
| | 22. Back Flow Preventer (Optional) |

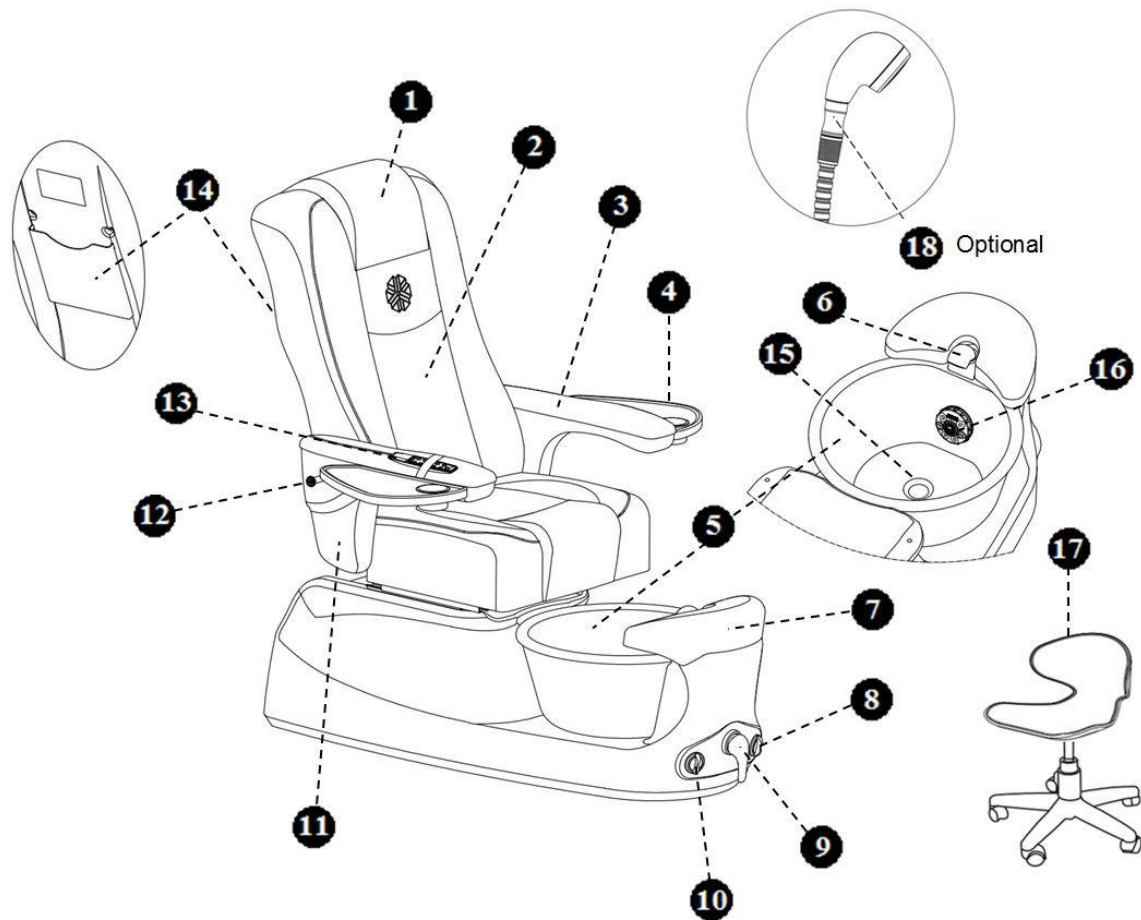
Identifying Parts for INFINITY™ Model



Pedicure Whirlpool with Massage System

- | | |
|---|---|
| 1. Headrest | 11. Sani-Drain™ System with discharge On/Off Knob |
| 2. Chair Cushion with Massage | 12. Vent Inlet (2 Places) |
| 3. Armrest Cushion | 13. Liner Hook |
| 4. Manicure-Tray | 14. Up/Down Armrest |
| 5. Aurora™ Bowl | 15. Vent Outlet (Optional) |
| 6. Flex Water Filler/Spray Spout | 16. Handbag (Purse) Hook |
| 7. Foot Rest with Calf Support | 17. Massage Remote Control |
| 8. Digital Control System Panel | 18. Paper Tray |
| 9. Dual Function Auto-Fill™ & Jet On/Off Knob | 19. Drain Stopper |
| 10. Hot/Cold Water Mixer Valve | 20. ECOJET® Magnetic Drive |
| | 21. Low Profile Pedicure Stool |
| | 22. Back Flow Preventer (Optional) |

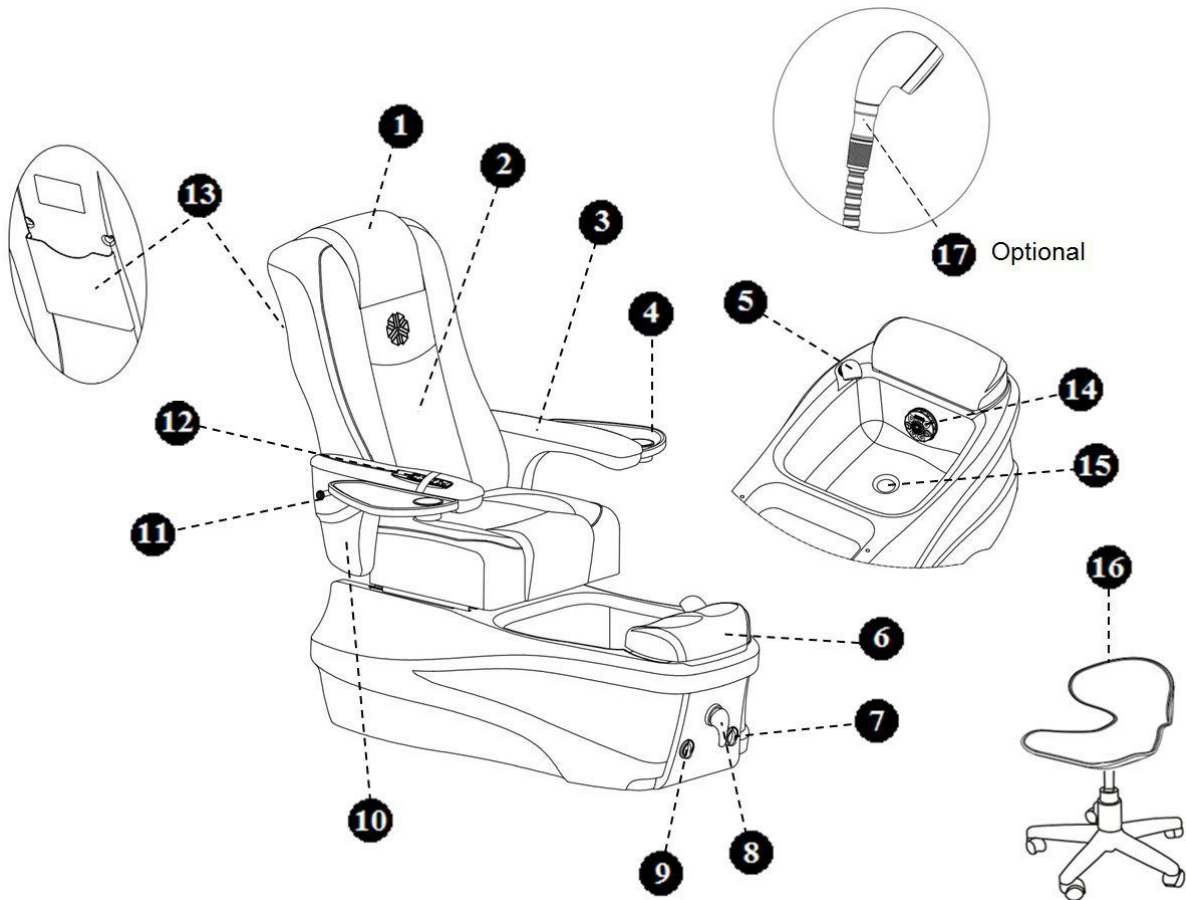
Identifying Parts for LIBERTE® Model



Pedicure Whirlpool with Massage System

- | | |
|--|------------------------------------|
| 1. Headrest | 11. Up/Down Armrest |
| 2. Chair Cushion with Massage | 12. Handbag (Purse) Hook |
| 3. Armrest Cushion | 13. Massage Remote Control |
| 4. Manicure-Tray | 14. Paper Tray |
| 5. Glass Bowl | 15. Drain Stopper |
| 6. Flex Water Filler/Spray Spout | 16. ECOJET® Magnetic Drive |
| 7. Adjustable Foot Rest | 17. Low Profile Pedicure Stool |
| 8. Jet On/Off Knob | 18. Back Flow Preventer (Optional) |
| 9. Hot/Cold Water Mixer Valve | |
| 10. Sani-Drain™ System with
discharge On/Off Knob | |

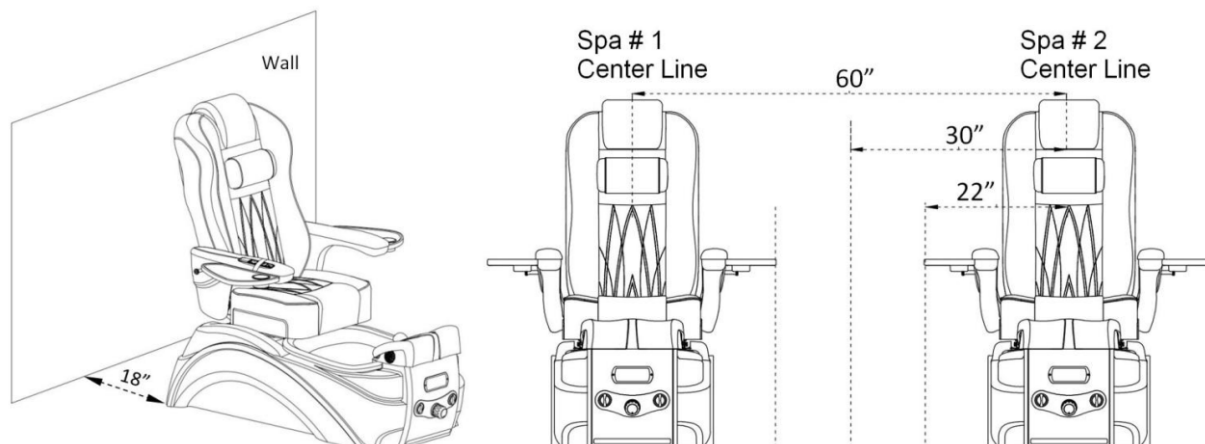
Identifying Parts for VERSAS® Model



Pedicure Whirlpool with Massage System

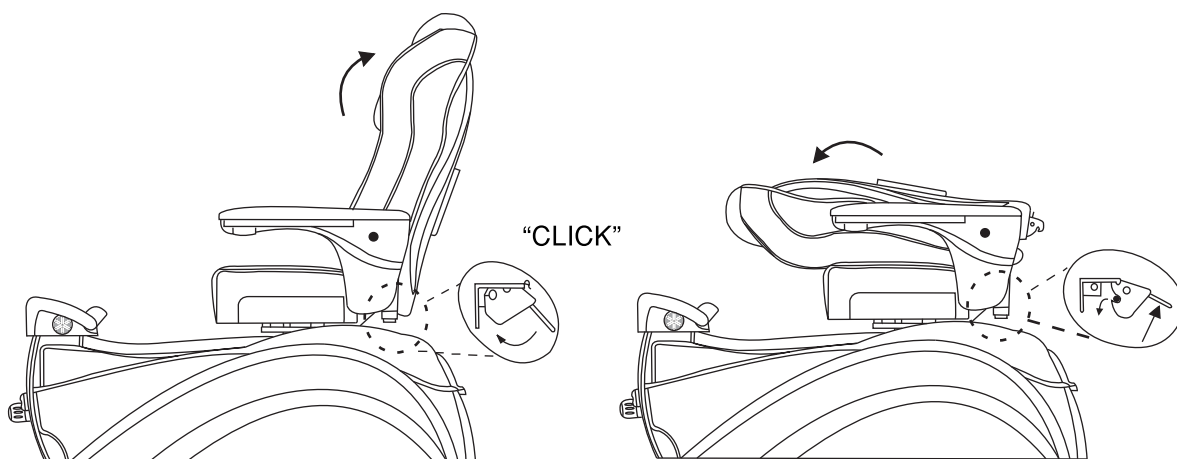
- | | |
|--|------------------------------------|
| 1. Headrest | 10. Up/Down Armrest |
| 2. Chair Cushion with Massage | 11. Handbag (Purse) Hook |
| 3. Armrest Cushion | 12. Massage Remote Control |
| 4. Manicure-Tray | 13. Paper Tray |
| 5. Flex Water Filler/Spray Spout | 14. Drain Stopper |
| 6. Adjustable Foot Rest | 15. ECOJET® Magnetic Drive |
| 7. Jet On/Off Knob | 16. Low Profile Pedicure Stool |
| 8. Hot/Cold Water Mixer Valve | 17. Back Flow Preventer (Optional) |
| 9. Sani-Drain™ System with discharge On/Off Knob | |

WALL CLEARANCE & SPA to SPA RECOMMENDED CLEARANCE



VERY IMPORTANT Both back of chair and seat are adjustable. When both are at maximum positions, one must allow 18"(44cm) from back wall to foot spa. This minimum distance assures unobstructed recline. Failure to follow this required dimension might damage your spa components and plumbing connections, which will void your warranty.

TOP CHAIR 1: FOLD & UNFOLD BACK-REST MASSAGE

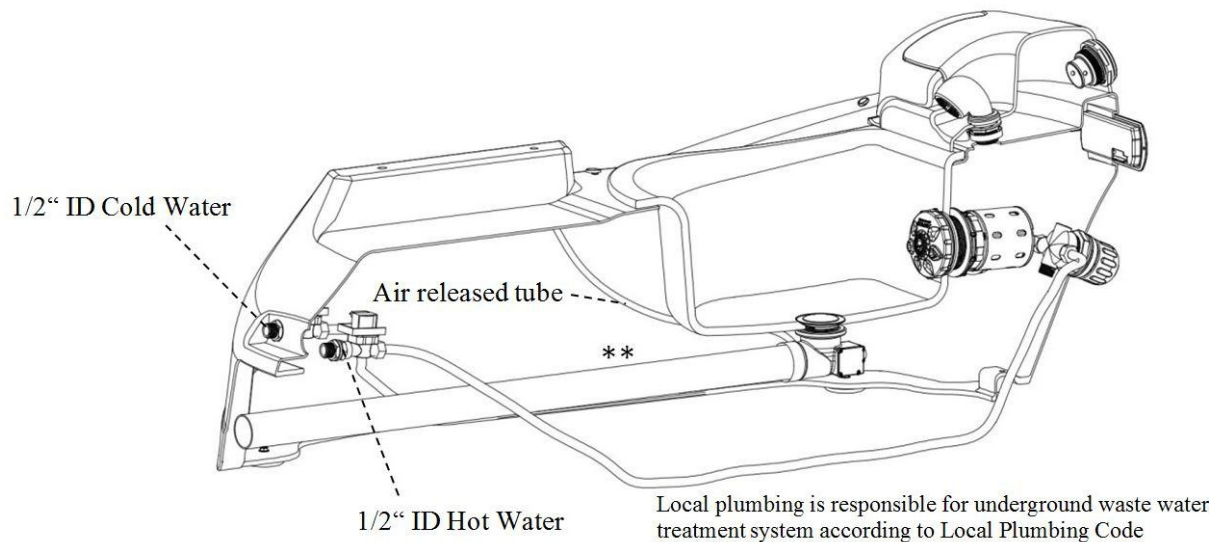


Raise the backrest until a "CLICK" is heard. Make sure the lever is locked before operating

To fold down backrest: Lift up lever handle.

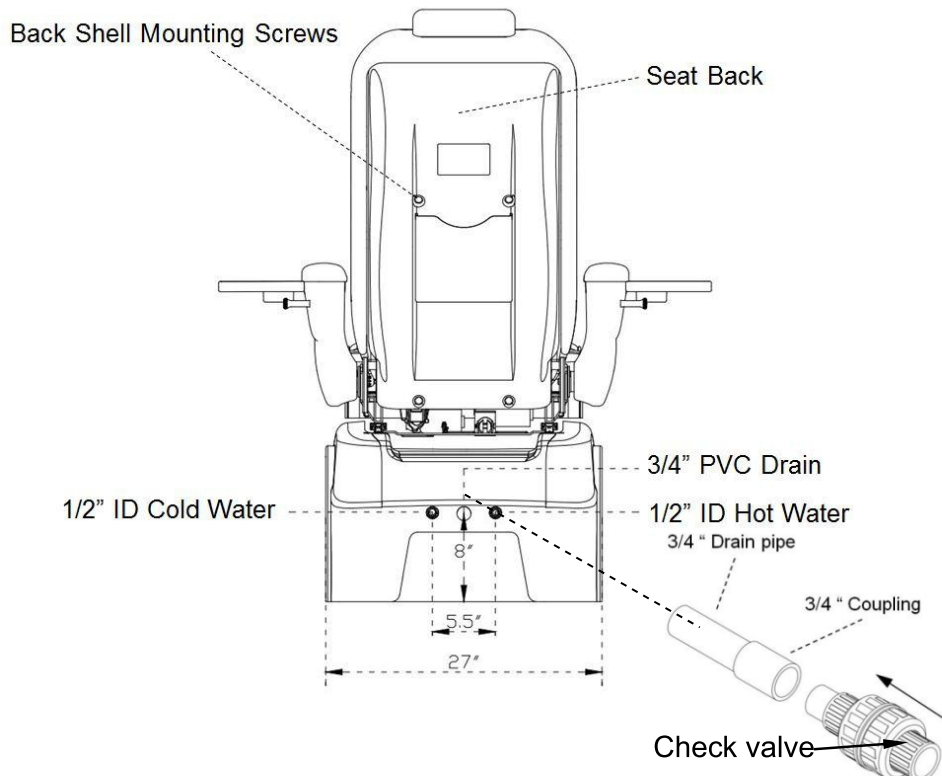
GRAVITY DRAIN

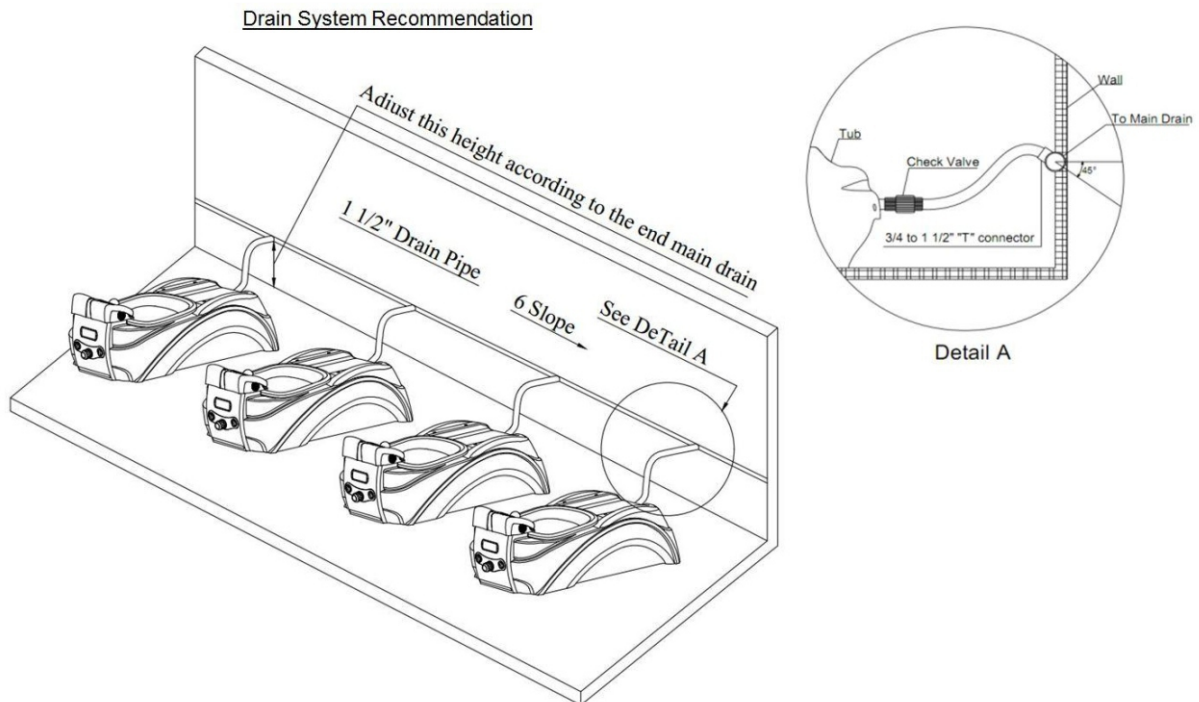
** Extra 1 1/4" Flex Hose is supplied for fast connecting to underground 1 1/2" connector



POWER DRAIN :

- Connect drain to meet local plumbing codes.
- Flexible connection to the drain should be removable for easy service and should not be permanent to prevent damages.



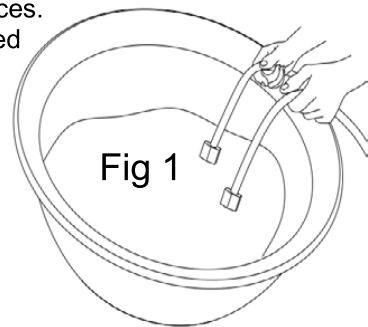


HOT AND COLD WATER SUPPLY LINES

Carefully connect 1/2" ID supply hoses (not provided) to fresh water sources. Shut-off valves (not provided) should be utilized. Valves should be placed outside the tub for easy access.

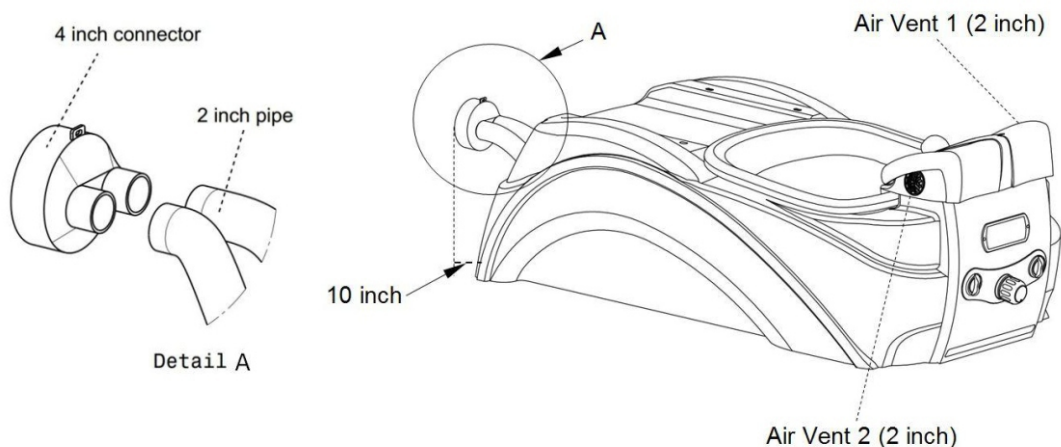
New construction: Make sure to remove all debris from new hot cold water pipes before hooking up to spa by draining a good amount of water to a bucket. See Fig 1.

Replacement Spa: Always use new hot/cold water hoses when connecting a new spa chair to prevent debris, such as old rubber particles, from clogging water inlet system.



VENTILATION SPA: (Optional)

Connect Ventilation "detail A" to meet exhausted vent system building code



ELECTRICAL AND PEDICURE SPA COMPONENT SPECIFICATIONS

All electrical connections MUST be made by a licensed electrician in accordance with Local & National Electrical and Building Codes.

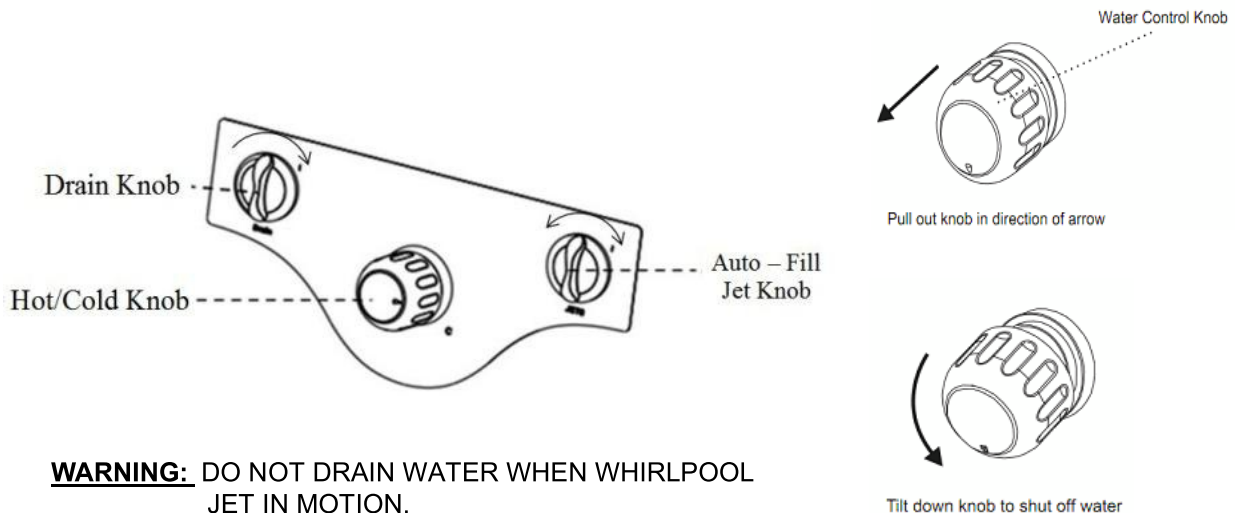

WARNING:

**IT IS EXTREMELY IMPORTANT THAT THE FOOT SPA OPERATES WITH GFCI PROTECTION
A 110V-50/60 Hz 15 Amp GFCI Must Be Utilized**

SPECIFICATIONS LIST ALL SPA WITH SAME DIMENSION IN A GROUP		
Spa Dimensions & Weights Prestige, Envision, Infinity, Luminous.	Spa (seat up-right): Spa (fully reclined): Empty Weight: Shipping Weight: Max. Handling Weight:	L=56"(142cm) W=31"(79cm) w/ Tray =47"(120cm) H=56"(142cm) L=76"(193cm) ~ 230 lbs. ~ 260 lbs. ~ 250 lbs.
Spa Dimensions & Weights Elite,	Spa (seat up-right): Spa (fully reclined): Empty Weight: Shipping Weight: Max. Handling Weight:	L=58"(147cm) W=31"(79cm) w/ Tray =47"(120cm) H=56"(142cm) L=78"(198cm) ~ 224 lbs. ~ 260 lbs. ~ 250 lbs.
Spa Dimensions & Weights Liberte, Versas.	Spa (seat up-right): Spa (fully reclined): Empty Weight: Shipping Weight: Max. Handling Weight	L=53"(134cm) W=31"(79cm) w/ Tray =47"(120cm) H=56"(142cm) L=68"(172cm) ~ 200 lbs. ~ 230 lbs. ~ 220 lbs.
Adjustable Stool	Pedicure Stool: Manicure Stool:	12"—13" 16.25"—20"
Spa Water Capacity	~ 4 US Gallon	
Jet Motor	120 VAC. At 85W 60Hz	
Massage, Motors, Seat Sliding & Reclining	24VDC, 2.5A x 5	
Discharge Pump	Motor —120V at 85W 60 Hz Maximum vertical lift: 3ft . Flow rate 400 GPH @ floor level	
Power source	115 VAC, 60HZ, 15A. Power needed per spa chair = 6 Amp	
Electrical Switches	One (1) electro-mechanical knob for the Whirlpool. Rated at 5A contact. One (1) electro-mechanical knob for the Drain. Rated at 5A contact.	
Safety	Pedicure Spa is UL Listed.	

AUTO OPERATION Auto-Fill™ Models (Refer To Page 16 For Manual Operation):

- 1.1 Use faucet knob to adjust optimal water temperature at “H” or “C” directory.
 - 1.2 Pull out and tilt down faucet knob to shut off water as needed or when spa chair is left unattended and overnight.
- ❖ Auto-Fill™ option can be simply reset to normal manual mode as a contingent system when automatic operation becomes unavailable. Please call our Customer care for instructions.



Auto-Fill™ / Jet Switch: (Dual-functional momentary switch located on the right side of the front panel)

1. **To turn water on:** Turn knob clockwise and release. Water will fill up to reach the sensor level and activate the whirlpool jet. Water sensor is located behind the basin.
2. **To turn water off:** Turn knob clockwise and release to turn off water. The switch can be activated to turn on or turn off water any time during the Auto-Fill™ cycle,

NOTE: Activate this Auto-Fill™/Jet Knob

1. When Whirlpool Jet is running, system will resume with turn off Jet
2. When water is full and Jet is off, system will resume with fill up water for 3sec and Jet turns on.

Drain Switch:

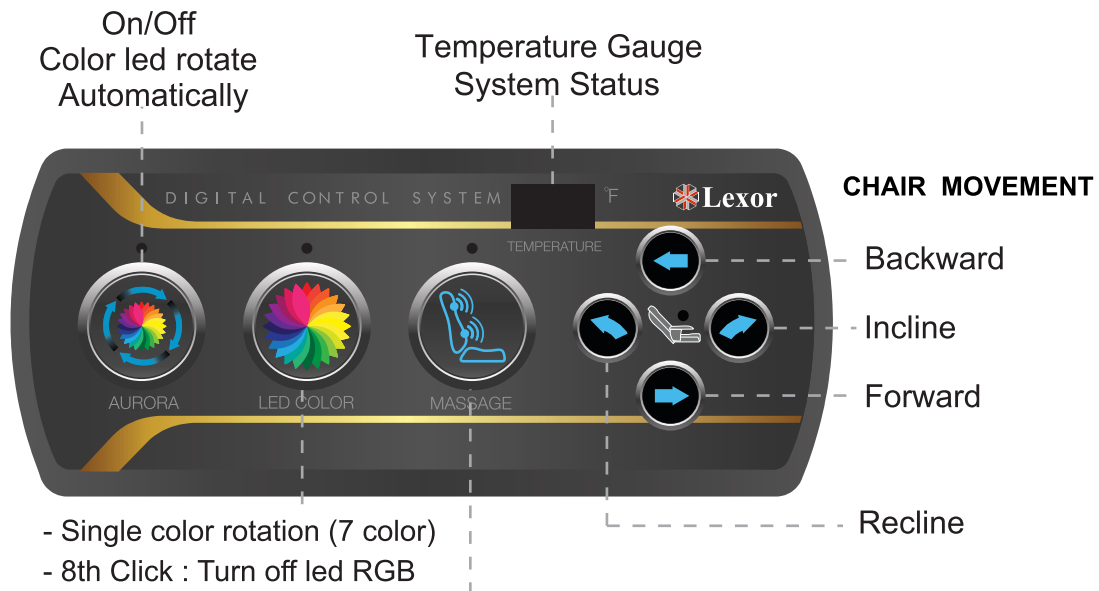
(Dual Action Electro-mechanical Switch located on the left side of the front panel)

When activating this switch, it will raise the drain-stopper and power up the drain pump (if exist) at the same time.

1. **To drain water:** Turn the drain knob clockwise. Drain pump is activated.
2. **To turn off the drain pump:** Turn the drain knob counterclockwise.

CAUTION: Reset the Drain knob to vertical position to close the drain stopper prior to filling up water

DCS Front Panel Functional & Operating Instructions: DIGITAL CONTROL SYSTEM



Resetting the water sensor level. (Empty basin prior to activating this mode)

Reset water sensor is required when the water level is out of range.



** Note :

- Click should be pressed slowly.
- Press and hold the AURORA™ Button for 3 sec to resume system operation or the system will be automatically resumed if no action taken in 20 sec .

MANUAL OPERATION (For Non Auto-Fill™ /Drain Models):**Filling**

Close the Drain Stopper by turning the Drain Knob counterclockwise. Utilizing the single lever hot/cold mixer faucet located on the front of the Pedicure Spa, fill the tub to the water level above the whirlpool jet at least 1 inch. You must completely submerge the jet. If during the operation of the whirlpool, the water level decreases, simply add more water.

Whirlpool Starting

Turn the Jet Knob located on the right side of the front panel to clockwise to turn on. Turn counterclockwise to shut off

**Warning**

Do NOT turn "ON" The WHIRLPOOL JET unless adequate water is in the tub

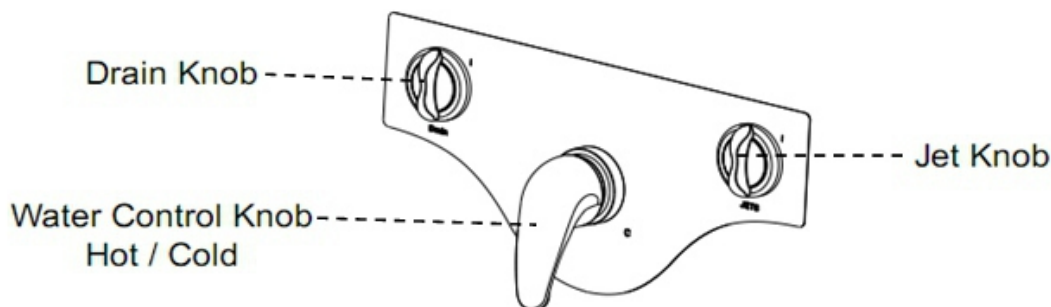
Draining

Turn the Drain Knob clockwise to open the Drain Stopper.
Power Drain will turn on automatically if drain pump exist.

**Warning**

Do NOT turn "ON" The DRAIN PUMP unless adequate water is in the tub
THE WARRANTY IS VOID IF THE PUMP HAS BEEN RUNNING DRY

NOTE: Whirlpool action can cause even small amounts of soap or body oil to foam excessively.
For this reason, refrain from using these products during the whirlpool cycle

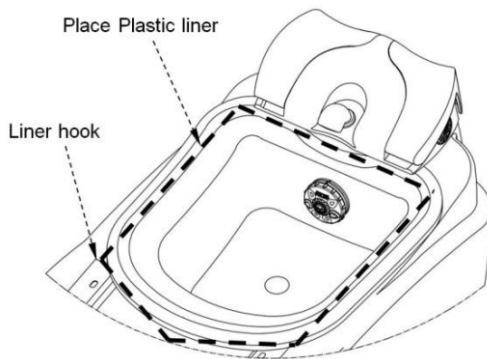


MAGNETIC WHIRLPOOL JET VERSION:

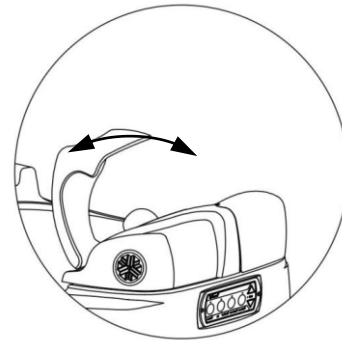


Turn Counterclockwise to remove Cap cover
Turn Clockwise to Close Cap Cover

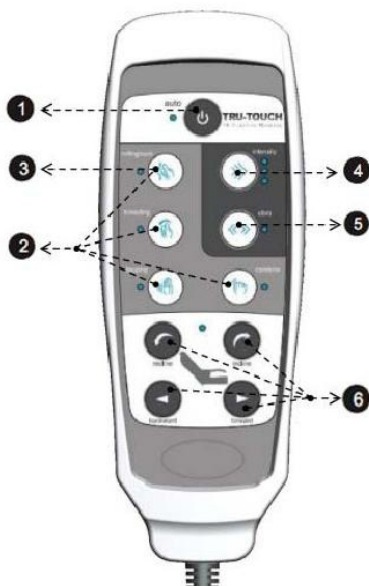
AUTOFILL SYSTEM USING PLASTIC LINER



FOOT-REST CALF SUPPORT



MASSAGE SYSTEM & REMOTE CONTROLLER



1. Press Auto Button to start Auto mode. Press again to turn off massage. Auto and Manual mode will run for duration of 15min.
2. Press any button (Rolling/Spot, Kneading, Tapping, Combine) to enter Manual mode.
3. Press Rolling/Spot to stop rolling up/down and stop at desired spot.
4. Press Intensity button to select tapping intensity.
5. Vibro Button/LED is an option. Pressing this button will resume with Tapping action.
6. Press any chair button (Recline, Incline, Backward, Forward) to move the chair to desired positions.

**WARNING**

You must always refer to your state or local guidelines for cleaning requirements. Overnight soaking with overdosed Chlorine may damage rubber part in basin

CLEANING PROCEDURE IS REQUIRED BY STATE BOARDS

*Note: *** A cleaning log should be kept with each pedicure spa ****

Each State will have slight differences in cleaning policies, please check with your state's Bureau of Barbering and Cosmetology or Regulatory Authority for specific details.

Safety Requirements for Pedicure Spas

The Bureau of Barbering and Cosmetology requires that salons using whirlpool pedicure foot spas must follow these disinfecting procedures to ensure proper cleaning and maintenance of the equipment and to prevent the spread of bacterial or parasitic disease.

Violation of this section may result on an administrative fine and/or disciplinary action. Each foot spa that is not in compliance with this section may result in a separate violation.

NOTE: Authority cited: Section 7312, Business and Profession Code. Reference: Section 7312 (e), Business and Profession Code.

Below is a suggestion for your pedicure spa chair's cleaning procedure:

After Each Customer

1. All water shall be drained and all debris shall be removed from the spa basin.
2. The spa basin must be cleaned with soap or detergent and water
3. The spa basin must be disinfected with an EPA-registered disinfectant with demonstrated bactericidal, fungicidal, and virucidal activity, which must be used according to manufacturer's instructions.
4. The spa basin must be wiped dry with a clean towel.

At the End of Each Day

1. The screen shall be removed, all debris trapped behind the screen shall be removed, and the screen and the inlet shall be washed with soap or detergent and water.
2. Before replacing the screen, the screen shall be totally immersed in an EPA-registered disinfectant with demonstrated bactericidal, fungicidal and virucidal activity, which must be used according to the manufacturer's instructions.
3. The spa system shall be flushed with low sudsing soap and warm for at least 10 minutes, after which the spa shall be rinsed and drained.

At Least Once A Week

1. The spa basin shall be filled completely with warm water and 1 teaspoon of 5.25% bleach for each gallon of water, or a solution of Sodium Hypochlorite of approximately 50ppm used according to manufacturer's instructions.
2. The spa system shall be flushed with the bleach and water solution, or Sodium Hypochlorite solution, for 5-10 minutes and allowed to sit for 6-10 hours.
3. The spa system shall be drained and flushed with water before use upon a patron.

Limited Warranty

To validate the Limited Warranty, The Registration Form must be filled out and signed Online, or on the form below, to confirm your knowledge on this Warranty Terms & Conditions within 15 days from Received Date.

Please return forms to:

Lexor, Inc.
Limited Warranty Registration Division
14800 Goldenwest St., Westminster, CA92683

Term Commencement:

Limited warranty term commences on date product is received by the customer.

2-Year Parts Exchange Limited Warranty:

All parts for pedi-spa model: Prestige, Envision, Elite, Luminous, Infinity, Liberte, and Versas.

1-Year Parts Exchange Limited Warranty:

All parts for Mani/Pedi Stools, and Customer Chairs.

Part Shipping Fee:

Shipping costs for replacement parts are covered under this Limited Warranty. To continue Warranty, Salon Owners have Fifteen (15) days to return defective parts to Lexor, Inc. at Salon Owner's expense prior to the next service.

Partial Terms and Conditions of Limited Warranty:

Wear and tear, physical damage, abuse, misuse, accidental events, freight damages, and Furniture lines are not included.

Replacement parts are supplied with instructions and specially designed for simple installation; therefore, do not require a technician onsite.

Customer phone support is not available on Thanksgiving, Christmas, New Years, Chinese New Year's, and Independence Day.

Transportation Damages:

Transportation damages must be claimed within Forty-Eight (48) hours after receiving the products by contacting customer support at Lexor. An investigation by the carrier can take up to 4-6 weeks to resolve.

Individual Parts Sold Warranty:

All purchased parts will be covered for 90-Days only.

Complete Top Chair w/ Massage will be covered for 6-Months limited warranty.

Complete Spa Base with Plumbing installed will be covered for 6-Months limited warranty.

Warranty Disclaimer:

Lexor shall have no obligation to repair, replace, or refund until the verification process is completed. This Limited Warranty applies only to Lexor Pedicure Spas utilized in the United States. This Limited Warranty is not transferable. Furthermore, this Limited Warranty is void if products are removed from its place of initial shipment as provided for in the invoice. This Limited Warranty is not valid on Clearance Items, items sold "As-Is", and all pedi-spa models before 2018.

Continuing a policy of constant research and development to improve the quality of our products, Lexor, Inc. reserves the right to change pricing, parts, design and specifications without prior notice or obligation.

QMTX.E319402
Plumbing Accessories

LEXOR INC E319402

14800 GOLDENWEST ST

WESTMINSTER, CA 92683-4933 USA

Pedicure Spa, Model(s) Prestige

Pedicure spas, Model(s) Elite, Infinity

Pedicure spas, additionally classified in accordance with the water retention requirements of ASME/ANSI A112.19.7M-2006, Model(s) Ambience, Elite Platinum, Elite Ultra, Envision, Essencia, Liberte, Luminous, Magna, Mystique, Q-Spa, Spa 100, Spa 200, Spa 300, PSD 400-xxx, Stellar, Ultima, Utopia, V-Spa, Versas, Vigor, Vista

QMTX7.E319402
Plumbing Accessories Certified for Canada

LEXOR INC E319402

14800 GOLDENWEST ST

WESTMINSTER, CA 92683-4933 USA

Pedicure Spa, Model(s) Prestige

Pedicure Spa, Model(s) Prestige

Pedicure spas, additionally classified in accordance with the water retention requirements of ASME/ANSI A112.19.7M-2006, Model(s) Ambience, Elite Platinum, Elite Ultra, Envision, Essencia, Liberte, Luminous, Magna, Mystique, Q-Spa, Spa 100, Spa 200, Spa 300, PSD 400-xxx, Stellar, Ultima, Utopia, V-Spa, Versas, Vigor, Vista

IAPMO RESEARCH AND TESTING, INC.

5001 East Philadelphia Street, Ontario, California 91761-2816 • (909) 472-4100 Fax (909) 472-4244 • www.iapmo.org



CERTIFICATE OF LISTING

IAPMO Research and Testing, Inc. is a product certification body which tests and inspects samples taken from the supplier's stock or from the market or a combination of both to verify compliance to the requirements of applicable codes and standards. This activity is coupled with periodic surveillance of the supplier's factory and warehouses as well as the assessment of the supplier's Quality Assurance System. This listing is subject to the conditions set forth in the characteristics below and is not to be construed as any recommendation, assurance or guarantee by IAPMO Research and Testing, Inc. of the product acceptance by Authorities Having Jurisdiction.

The most updated information on this Certificate of Listing is available online at pld.iapmo.org

Effective Date: July 2016 (To be renewed annually)

Product: Pedicure Fixture

Issued To: Lexor Inc
14800 Golden West St.
Westminster, CA 92683

Identification: Product shall be permanently and legibly marked with manufacturer's name or trademark, and model number. Product shall also bear the UPC® certification mark. Markings shall be applied so as to be visible after installation.

Characteristics: Pedicure Fixture consists of a foot tub fixture that may be equipped with components such as supply fittings, waste fittings, with or without a chair, and/or jet(s) and suction fitting(s) to circulate water. To be installed in accordance with the manufacturer's instructions and the latest edition of the Uniform Plumbing Code.

Products listed on this certificate have been tested by an IAPMO R&T recognized laboratory. This recognition has been granted based upon the laboratory's compliance to the applicable requirements of ISO/IEC 17025.

Products are in compliance with the following standard(s):

IAPMO IGC 281-2015a


Chairman, Product Certification Committee


CEO, The IAPMO Group



This listing period is based upon the last date of the month indicated on the Effective Date and Void After Date shown above. Any change in material, manufacturing process, marking or design without having first obtained the approval of the Product Certification Committee, or any evidence of non-compliance with applicable codes and standards or of inferior workmanship, may be deemed sufficient cause for revocation of this listing. Production of or reference to this form for advertising purposes may be made only by specific written permission of IAPMO Research and Testing, Inc. Any alteration of this certificate could be grounds for revocation of the listing.



EUROPEAN INSPECTION AND CERTIFICATION COMPANY S.A.

CERTIFICATE OF CONFORMITY

FULLNESS EXAMINATION OF TECHNICAL FILE

Certificate No. : EMC.0025
Issue Date : 23/05/2016
Applicant : LAC LONG CO., LTD.
(Name & Address) : Lot Q4, 8th Street, Long Hau Industrial Park,
Long Hau Ward, Can Giuoc District, Long An Province, Vietnam
Manufacturer : Same as applicant
(Name & Address)
Test Report Nos. : E16032004
Product Description : SPA CHAIR
Model(s) : Luminous Spa, Infinity Spa, Elite Spa, Mystique Spa, Envision Spa,
Liberte Spa, Ultima Spa, European touch Spa 100, European touch
Spa 200, European touch Spa 300
Directive(s) : Electromagnetic Compatibility Directive 2004/108/EC
Standard(s) : EN 55014-1:2006/A2:2011, EN 55014-2:1997/A2:2008

This is to attest that, upon the relevant request of the applicant, EUROCERT as Third Party Authority has reviewed the Technical Construction File of the described product which found to fulfill the basic health and safety prerequisites of above mentioned Directive(s).

Note:

- The manufacturer should issue a EC Declaration of Conformity according to the basic requirements of the applicable and relevant EC directives.
- The holder of the certificate shall use it in connection with the EC declaration of conformity.
- The CE marking can be affixed on the above mentioned product with the manufacturer's responsibility, if all relevant and applicable EC directives are complied with.
- All modifications to the Technical File should be first submitted to the Third Party Inspection Authority to ensure further validity of this attestation.
- This certificate is valid only for the product and configuration described above.



Third Party Authority Stamp

On Behalf of EUROCERT

George N. Sifonios
Director of Development

89, CHLOIS STR. & LIKOVRISEOS, 144 52 METAMORFOSI, ATHENS, GREECE
Tel.: ++30 210 62.52.495, 30 210 62.53.927 - Fax: ++30 210 62.03.018
Internet site: www.eurocert.gr - e-mail: eurocert@otenet.gr





**OUR PEDI-SPAS ARE
GUARANTEED SAFEST
IN THE INDUSTRY**



INDUSTRY'S BEST CUSTOMER SERVICE

Lexor offers the industry's leading **CUSTOMER CARE SUPPORT** which is available to answer your phone call **24 hrs. a day, 7 days a week.** You can also submit a request online any time at www.lexor.com.



Customer Care Team

14800 GOLDENWEST ST.,
WESTMINSTER, CA 92683

Support Toll Free:
800.559.3630

866.PEDI-SPA
www.lexor.com



KEYWORD:
lexorpedispa

LEXOR HEADQUARTERS

WESTMINSTER, CA 14800 Goldenwest St., Westminister, CA 92683

SHOWROOMS & SERVICE CENTERS

ATLANTA, GA

4500 Satellite Blvd., Ste. 1130
Duluth, GA 30096

BALTIMORE, MD

3101 Washington Blvd.
Baltimore, MD 21230

BOSTON, MA

1411 Dorchester Ave., Flr. 1, Ste. 1
Dorchester, MA 02122

CHICAGO, IL

4928 N. Broadway, Ste. 101
Chicago, IL 60640

DALLAS, TX

9780 Walnut St., Ste. 394
Dallas, TX 75243

FALLS CHURCH, VA

7252 Arlington Blvd.
Falls Church, VA 22042

HOUSTON, TX

11209 Bellaire Blvd., Ste. C-18
Houston, TX 77072

ORLANDO, FL

1525 E. Colonial Dr., Ste. 2
Orlando, FL 32803

PHOENIX, AZ

3611 N. 35th Ave.
Phoenix, AZ 85017

PORTLAND, OR

8001 S.E. Powell Blvd., Ste. D
Portland, OR 97206

SAN JOSE, CA

979 Story Rd., Ste. 7090
San Jose, CA 95122

SEATTLE, WA

1043 S. Jackson St., Ste. 101C
Seattle, WA 98104

ONTARIO, CANADA

90 Wings Rd., Ste. 23
Woodbridge, ON L4L 6A9